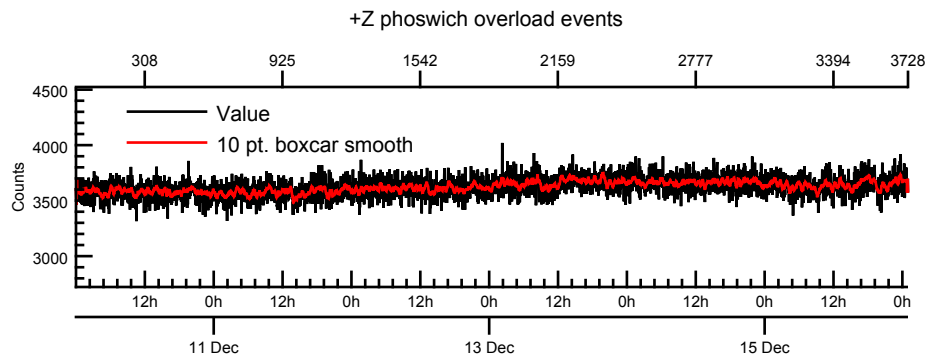
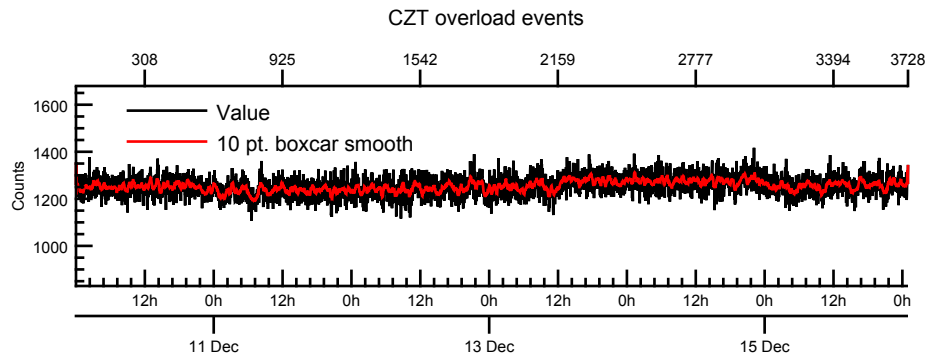
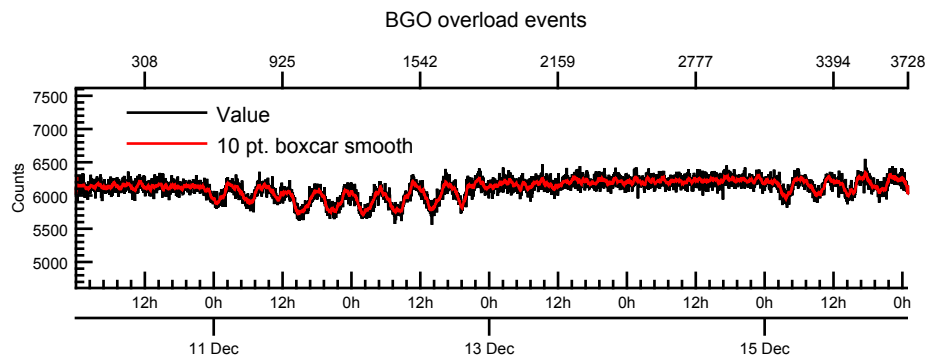
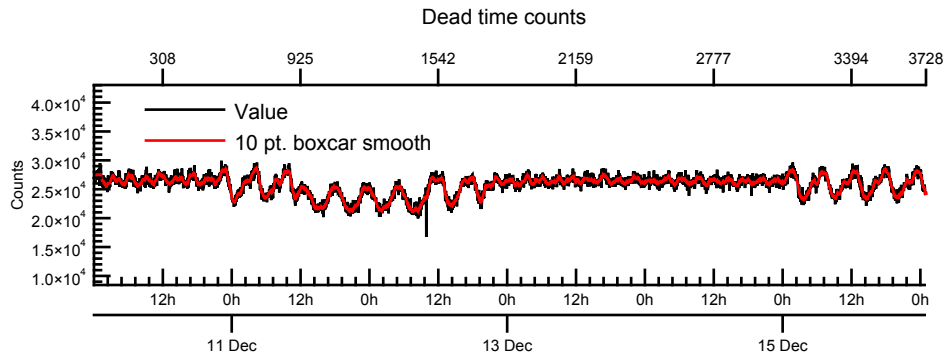


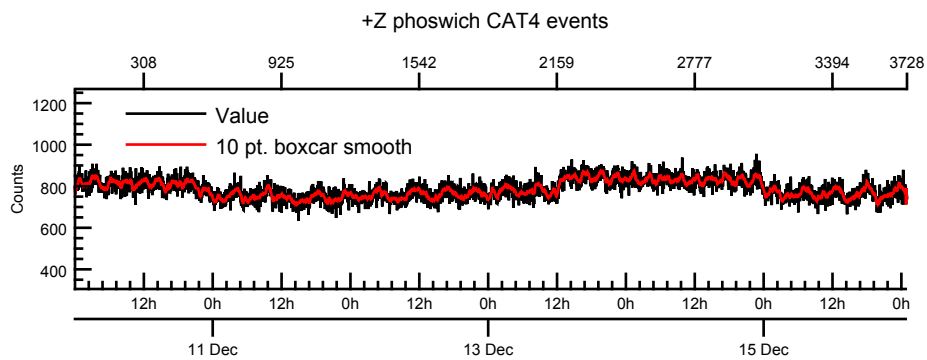
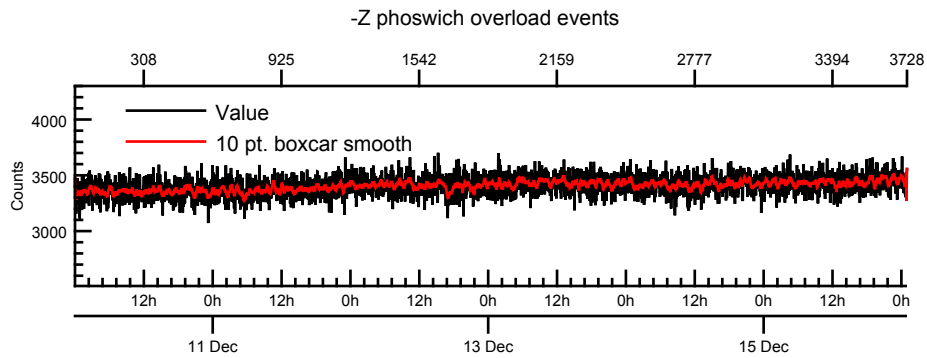
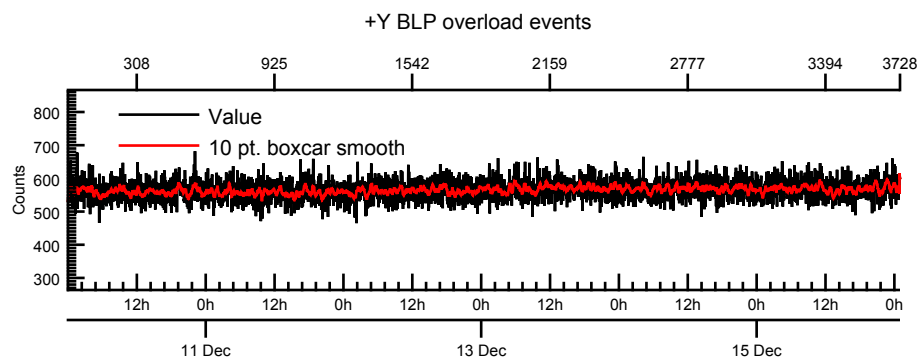
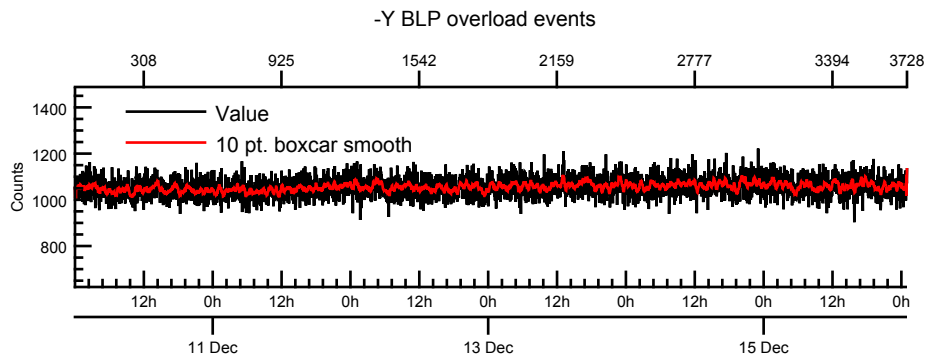
NASA Dawn Mission
GRaND@Ceres Browse Charts
 Ceres ctl DA801 15344_1

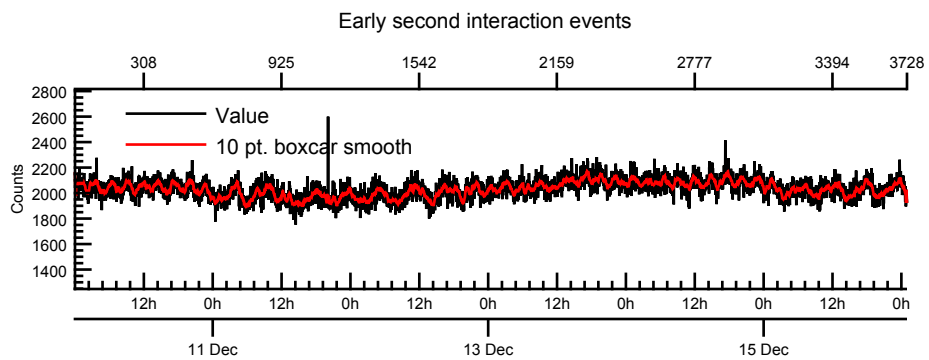
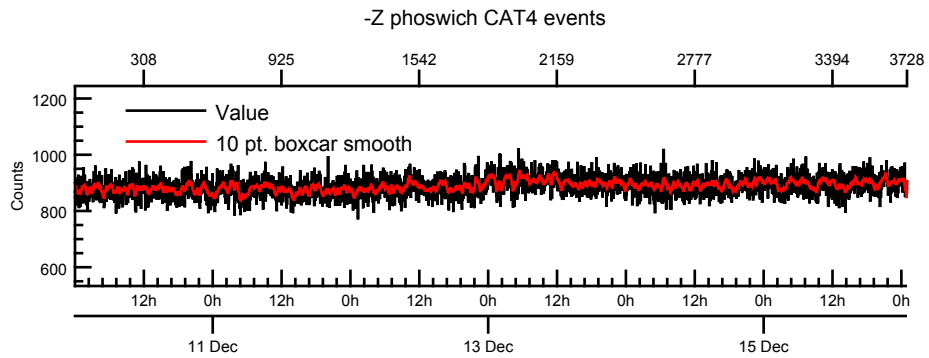
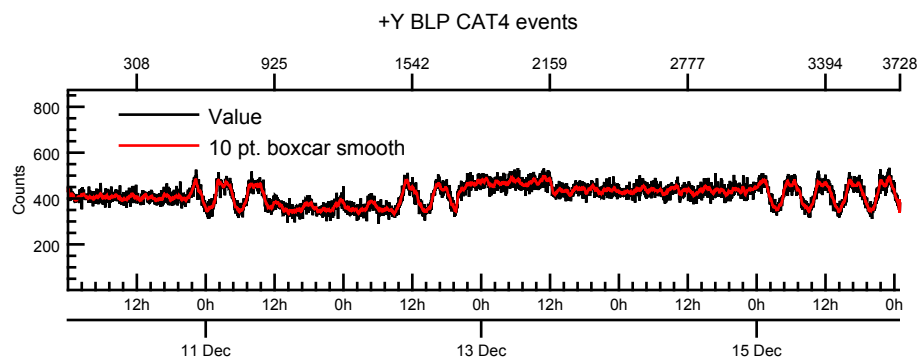
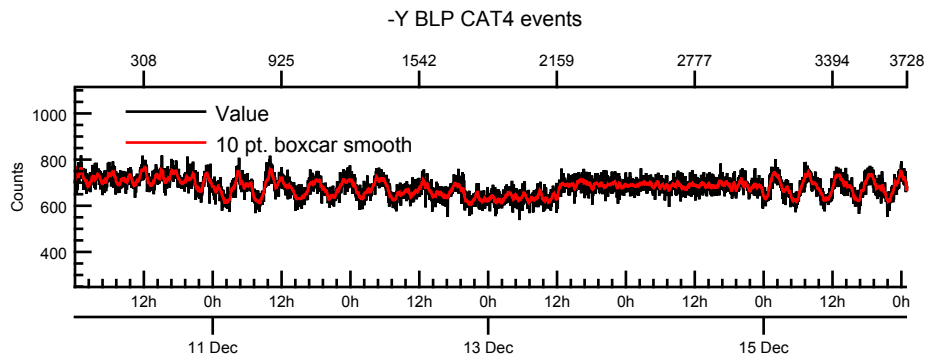
- Number of science records: 3729
 0 missing science packets with 0 gaps.
 Start/End: 2015-12-10T00:00:10 to 2015-12-16T00:58:50
- Number of SOH records: 14914
 0 missing SOH packets with 0 gaps.
 Start/End: 2015-12-10T00:00:35 to 2015-12-16T00:59:35
- Comments: Browse charts.
 - Provides an overview of data contained within this directory.
 - Refer to the .STA file for detailed state information.
 - The energy scale for calibrated spectra may not be accurate.
 - Missing data count may be in error when power on data are present.

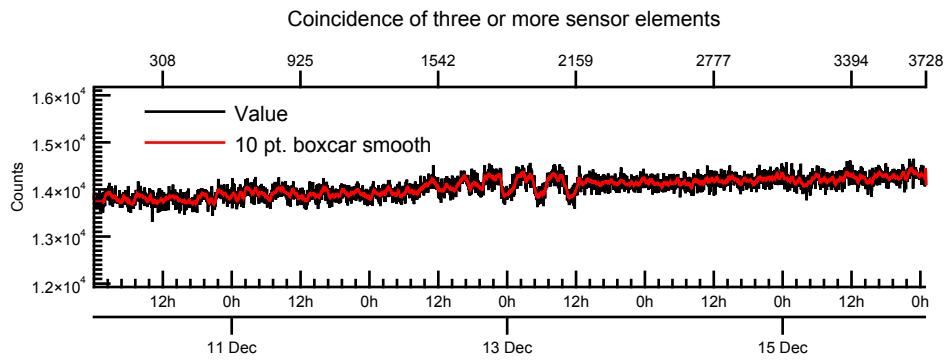
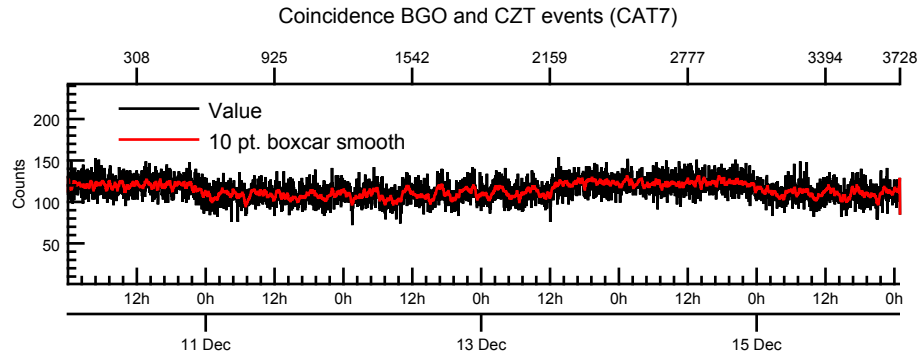
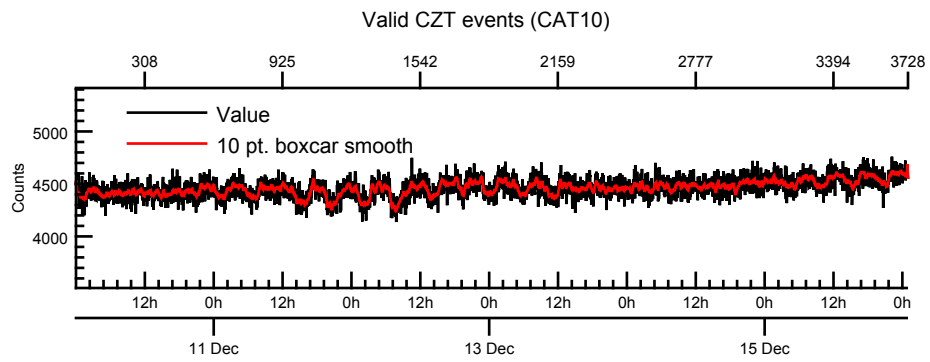
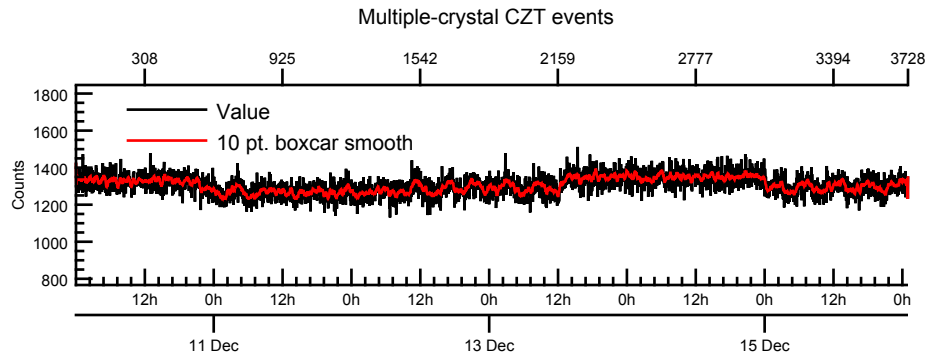
- Number of states = 1
- Instrument settings for first state (STATE_INDEX 0):

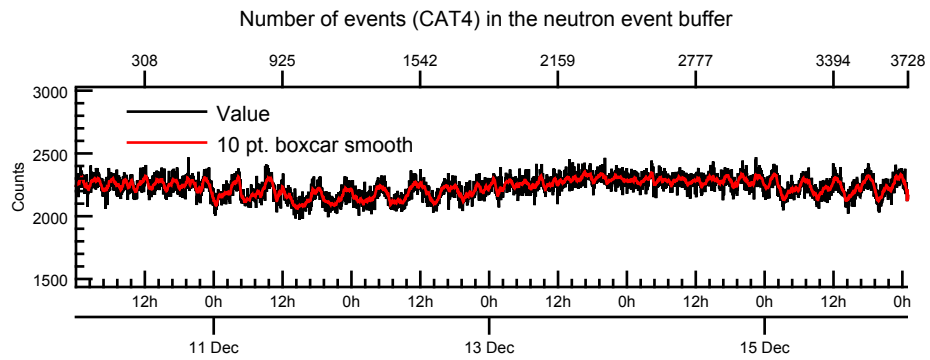
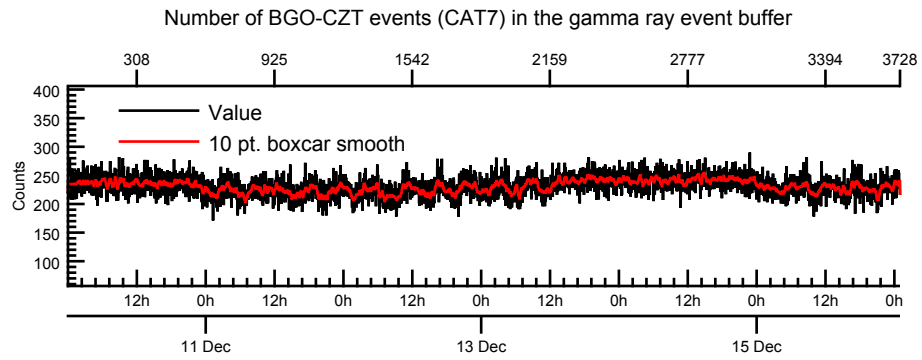
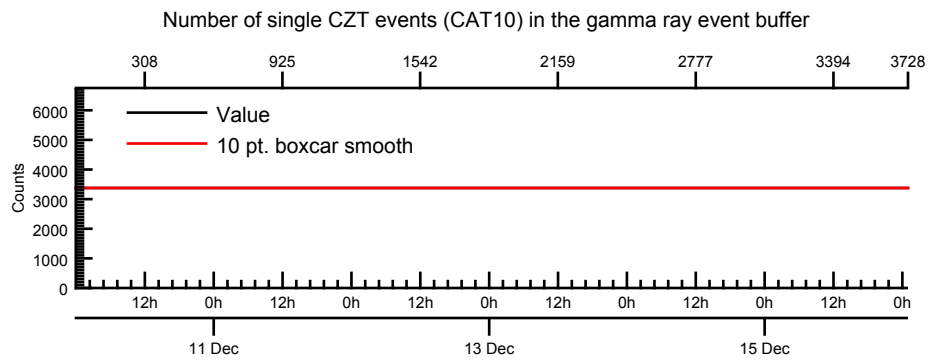
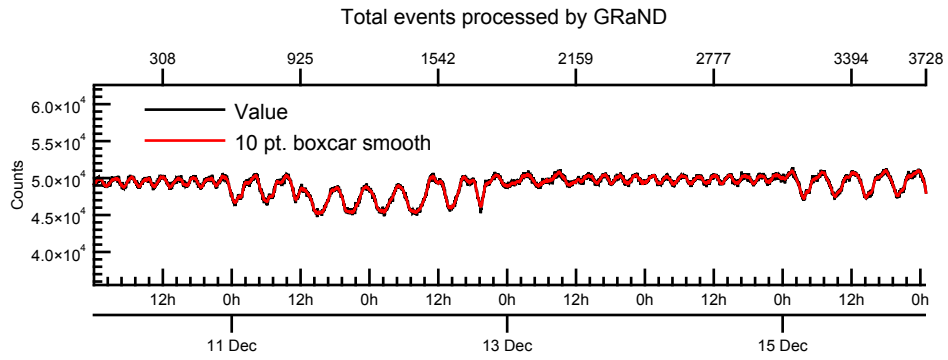
TELREADOUT	140	NEMG_TOT_EVTS	3876
TELSOH	35	NEMG_CZT_EVTS	3376
MODE	1	NEMN_TOT_EVTS	2800
HVPS1	1	L_BGO_CW	1
HVPS1_SET	185	H_BGO_CW	64
HVPS2	1	L_BGO_ROI	1
HVPS2_SET	173	H_BGO_ROI	64
HVPS3	1	L_BLP_MY_CW	1
HVPS3_SET	178	H_BLP_MY_CW	64
HVPS4	1	L_BLP_MY_ROI	1
HVPS4_SET	182	H_BLP_MY_ROI	64
HVPS5	1	L_BLP_PY_CW	1
HVPS5_SET	127	H_BLP_PY_CW	64
HVPS6	1	L_BLP_PY_ROI	1
HVPS6_SET	170	H_BLP_PY_ROI	64
PM5_LVPS	1	L_BLP_MZ_CW	1

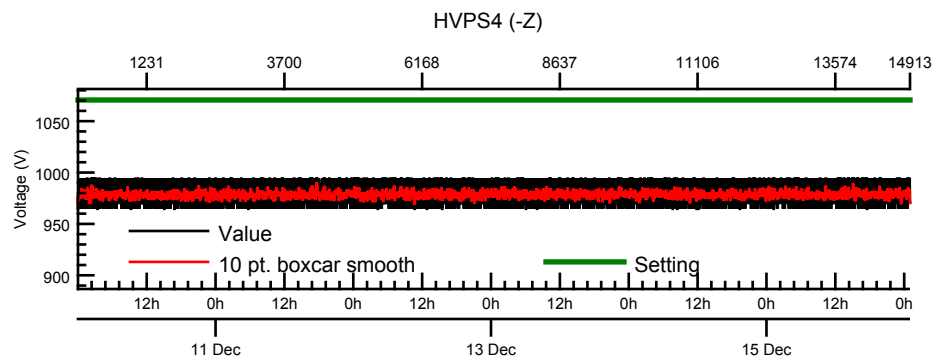
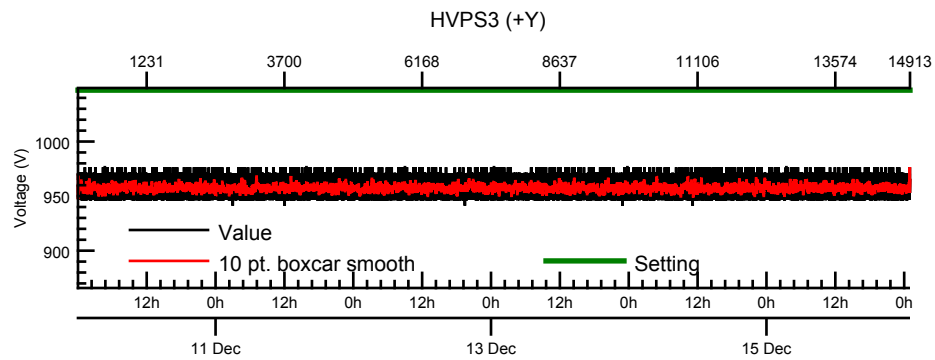
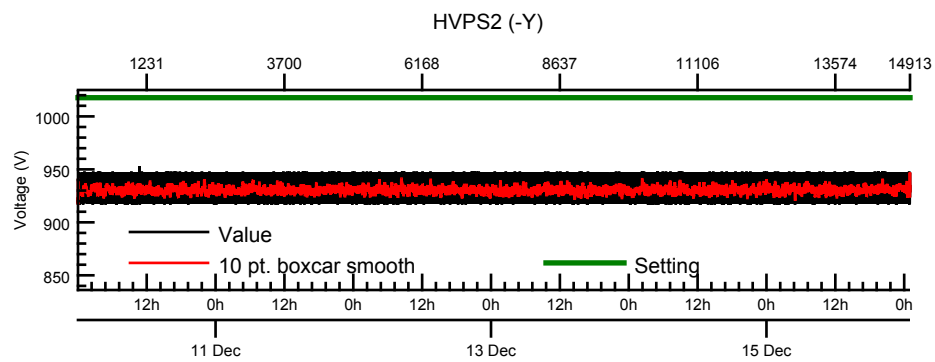
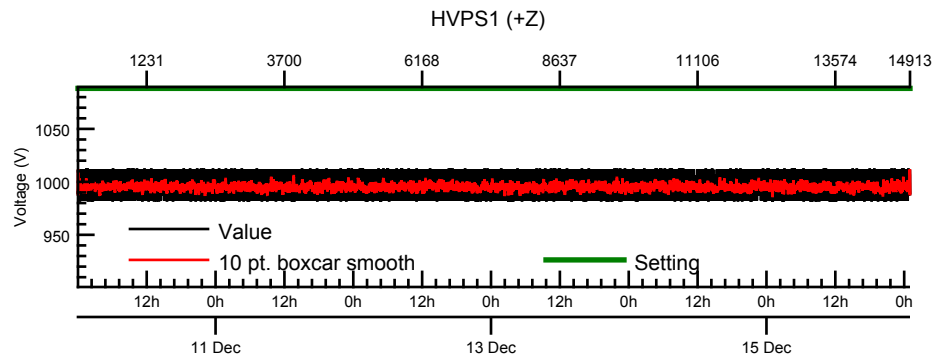


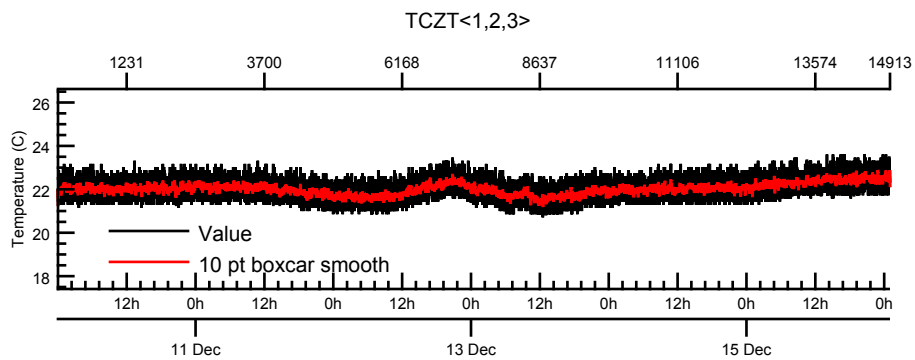
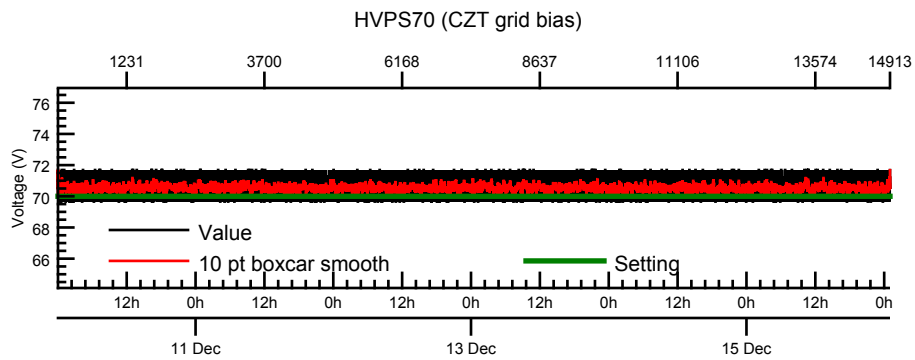
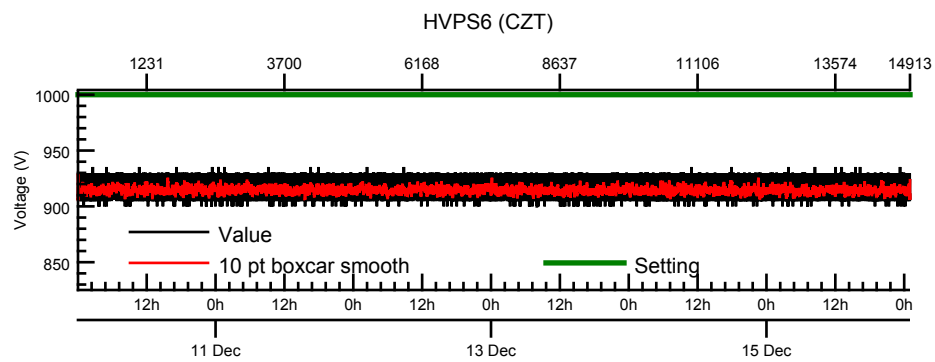
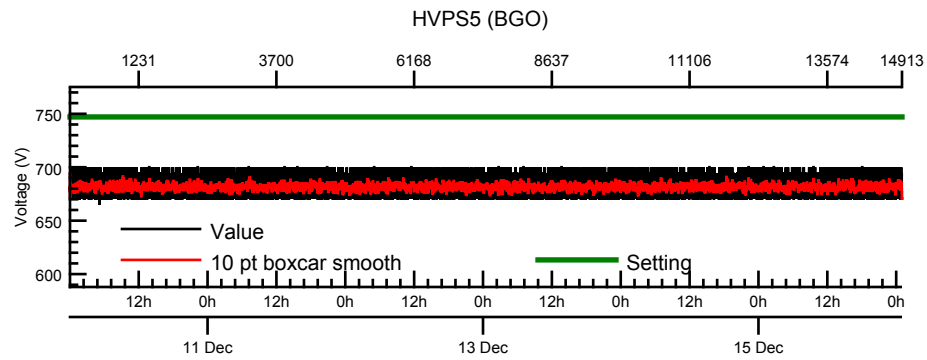


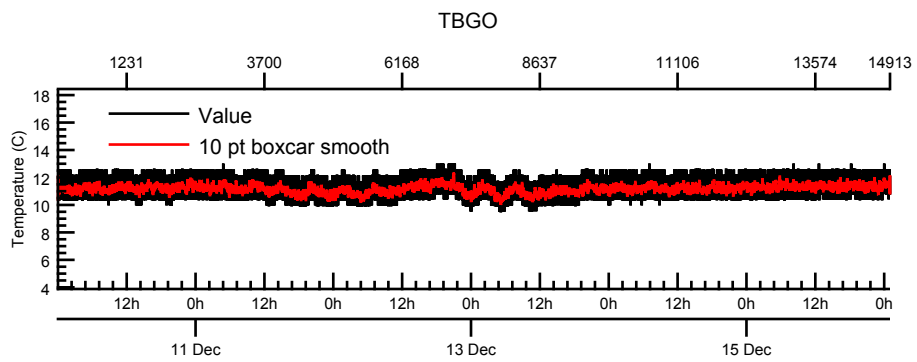
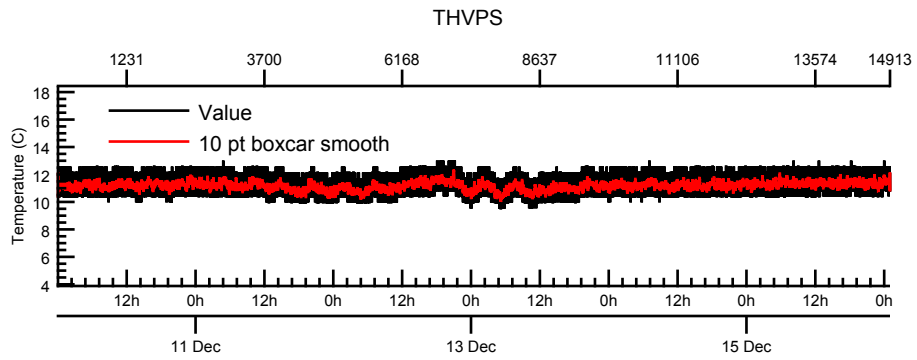
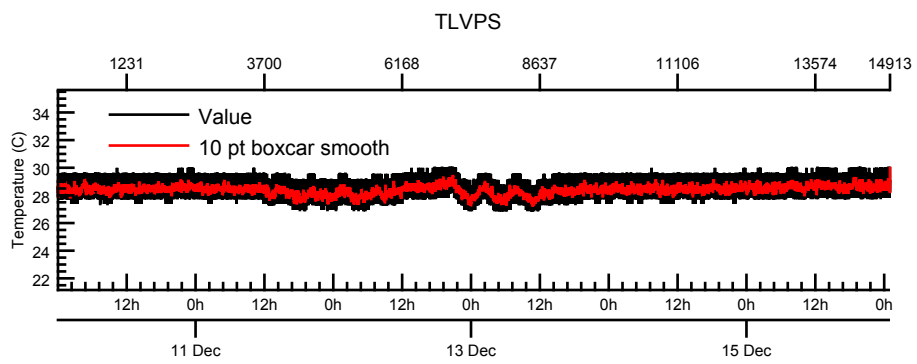
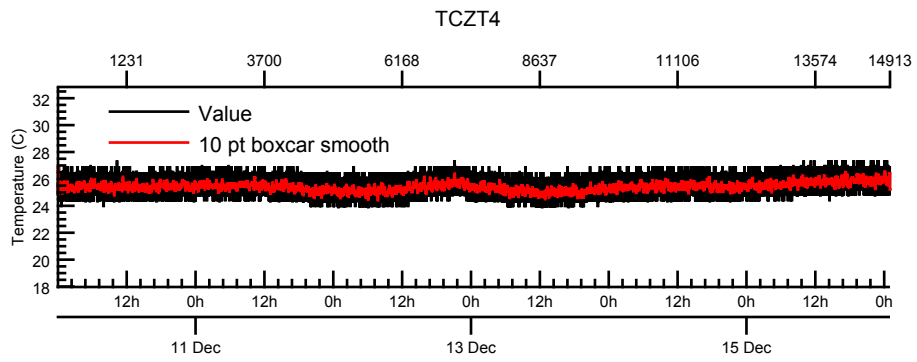


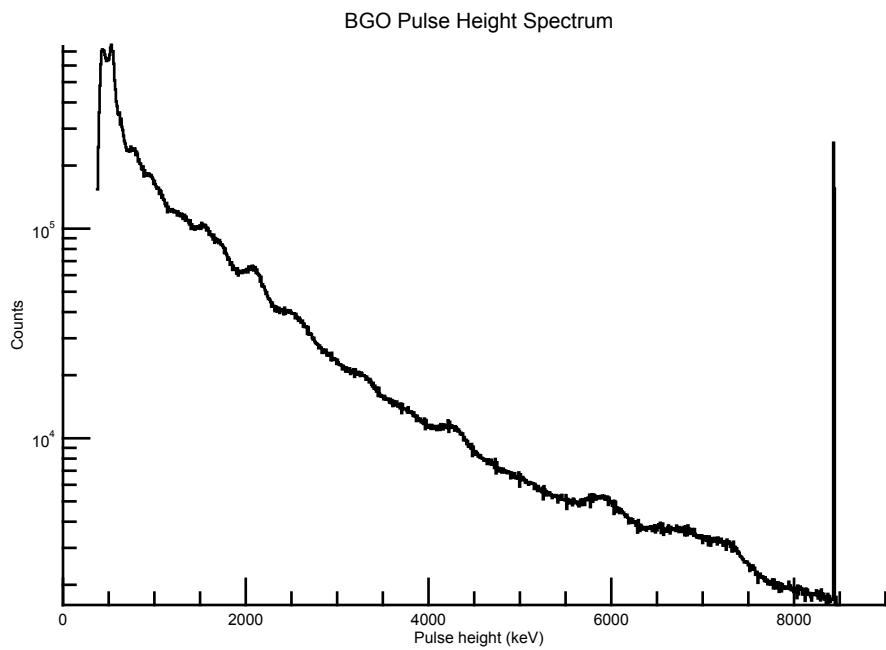
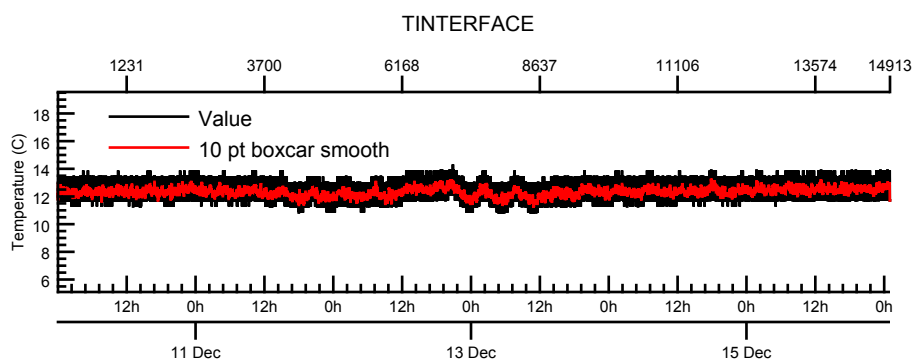
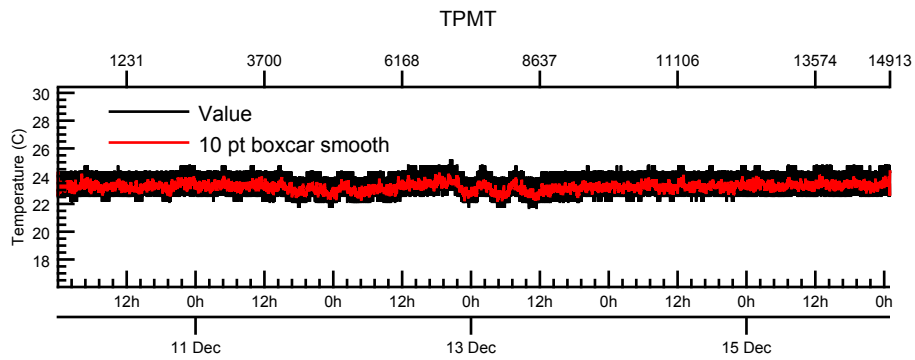




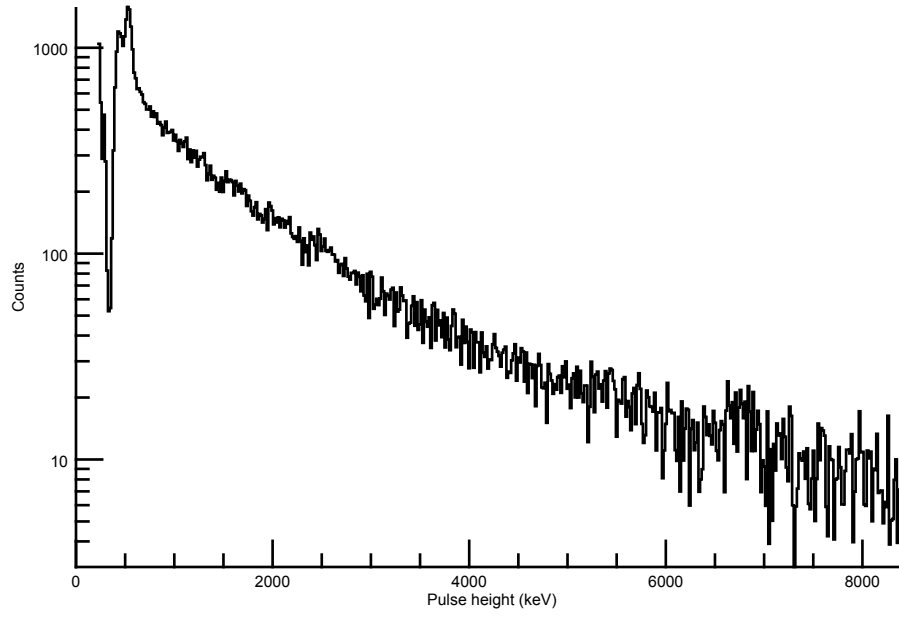




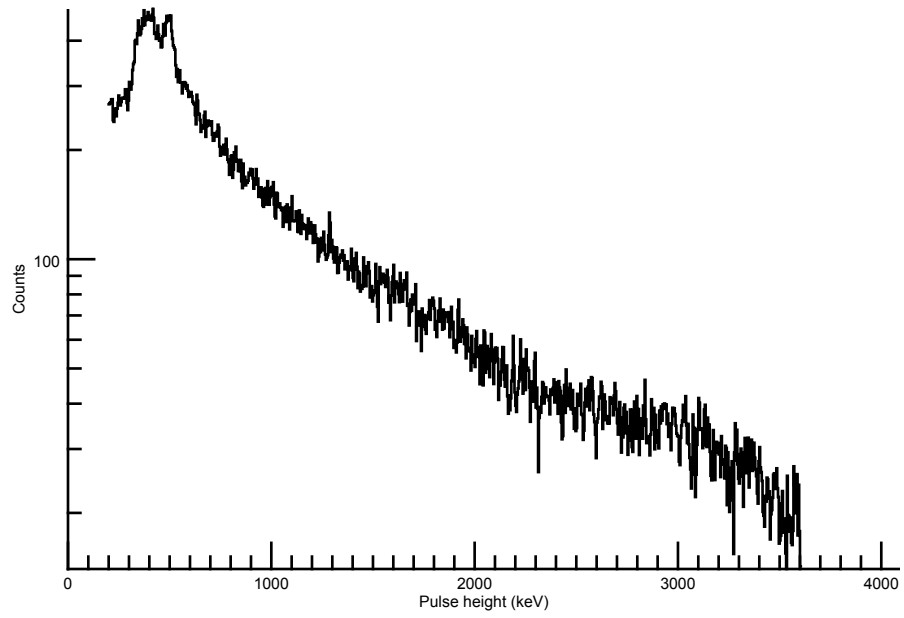




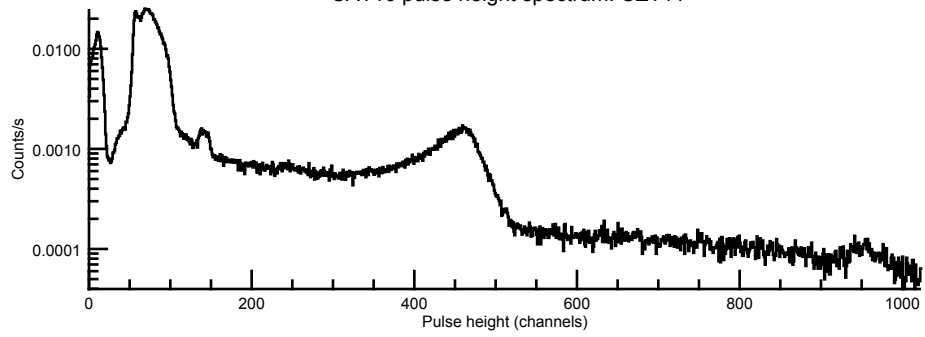
BGO-CZT pair spectrum: BGO



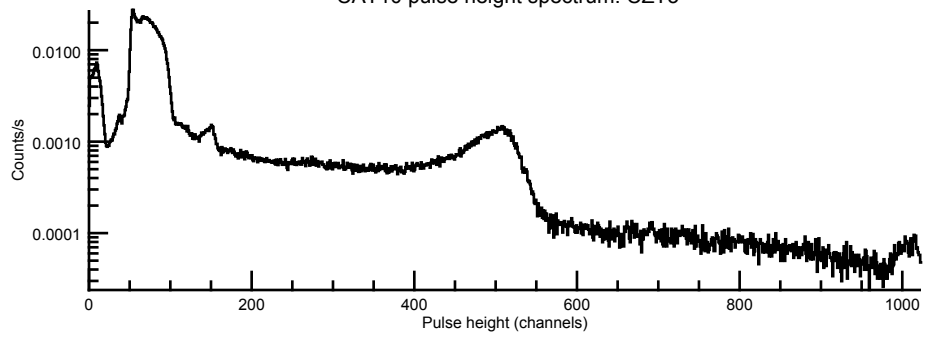
BGO-CZT pair spectrum: CZT



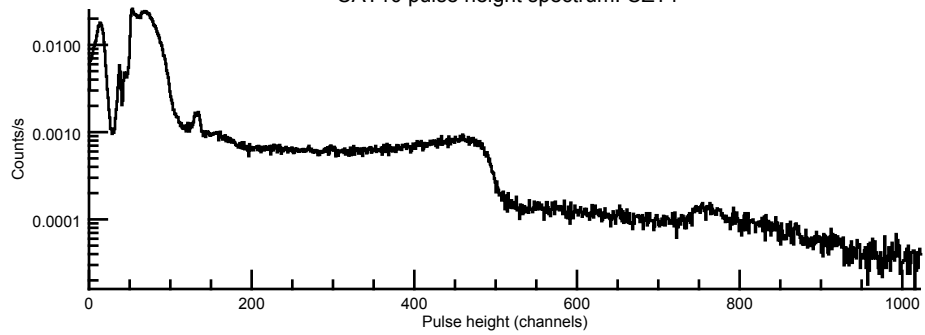
CAT10 pulse height spectrum: CZT11



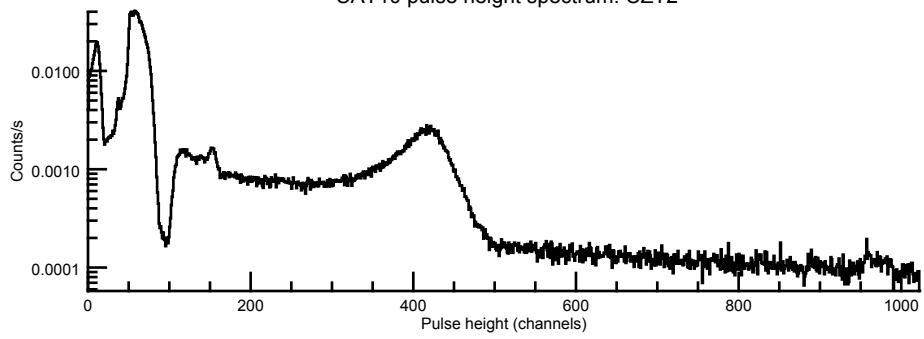
CAT10 pulse height spectrum: CZT3



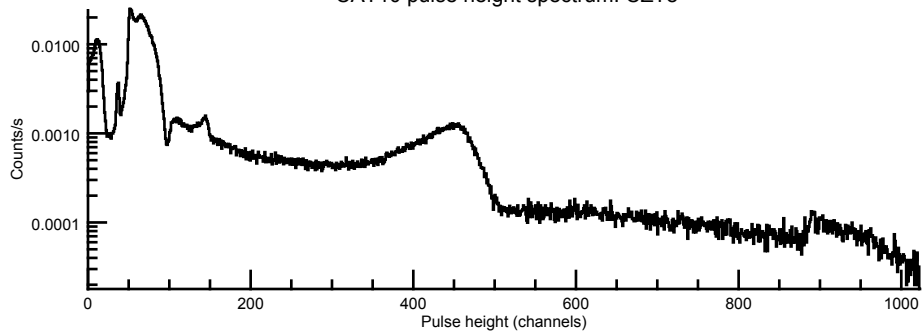
CAT10 pulse height spectrum: CZT1



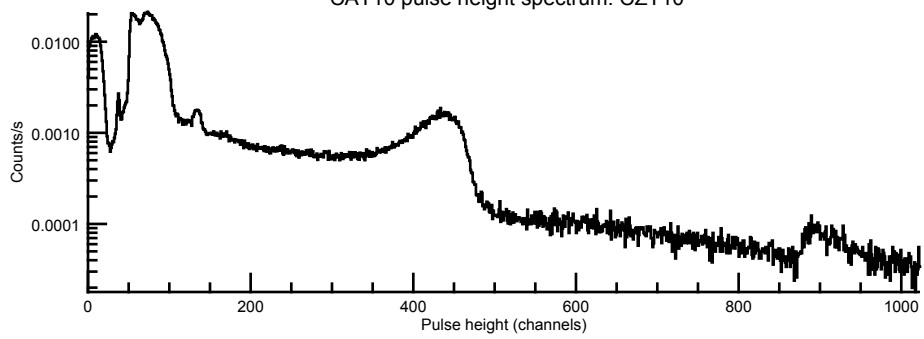
CAT10 pulse height spectrum: CZT2



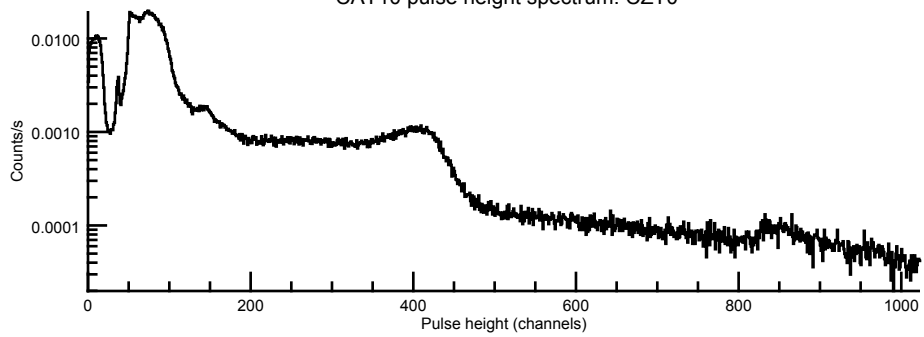
CAT10 pulse height spectrum: CZT8

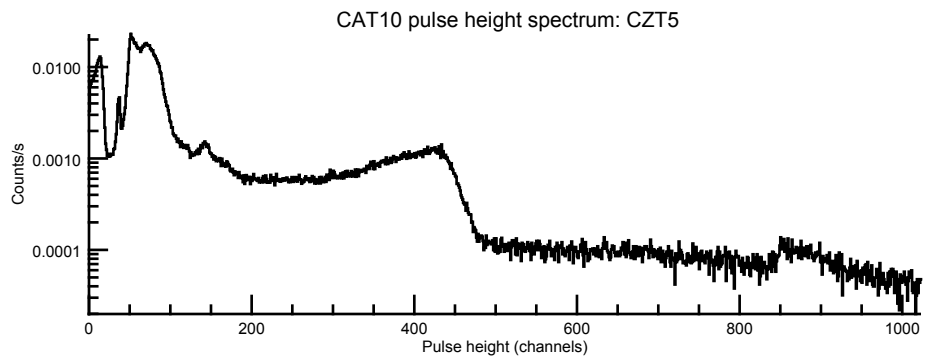
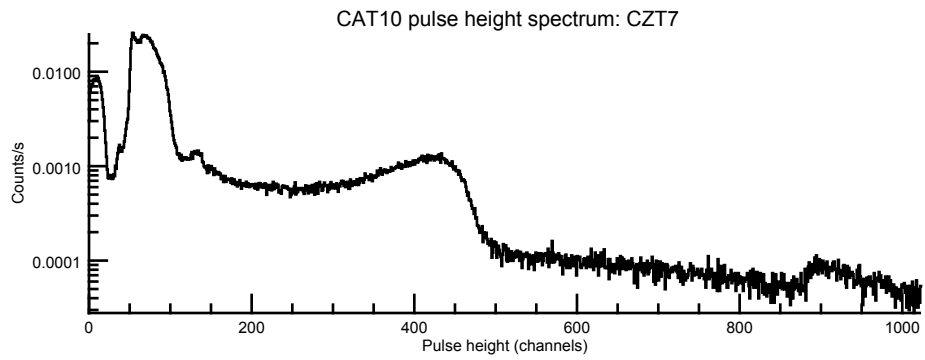
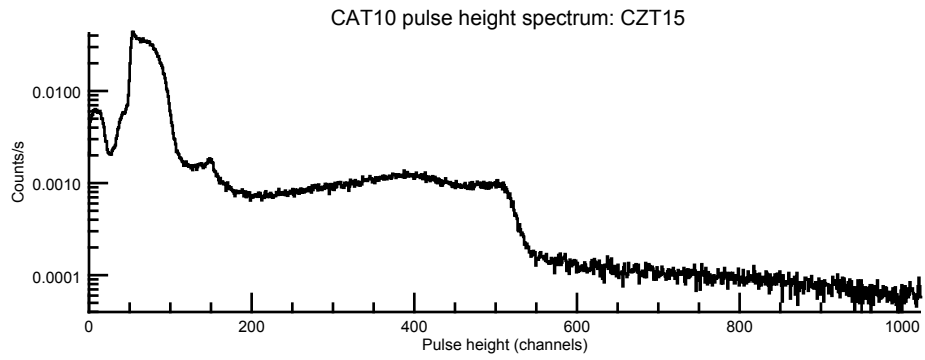


CAT10 pulse height spectrum: CZT10

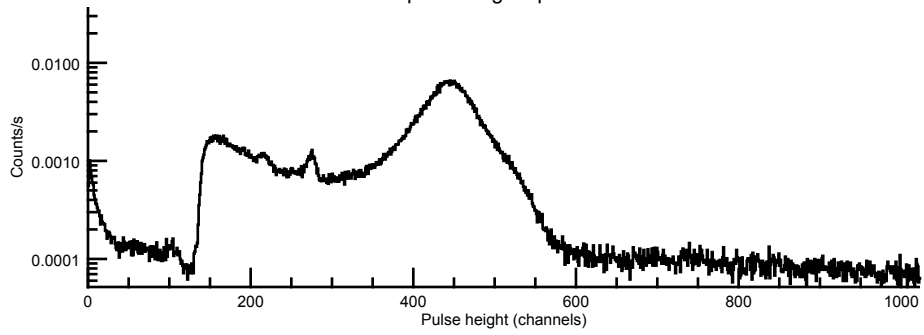


CAT10 pulse height spectrum: CZT0

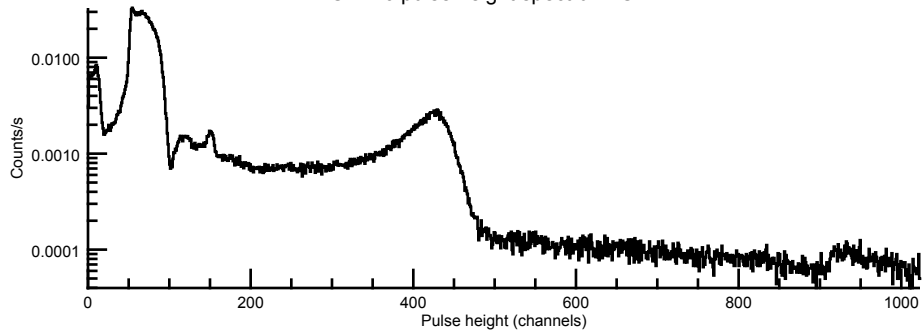




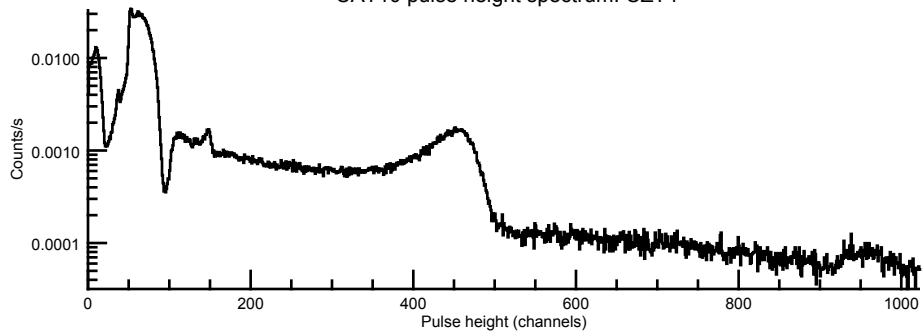
CAT10 pulse height spectrum: CZT6



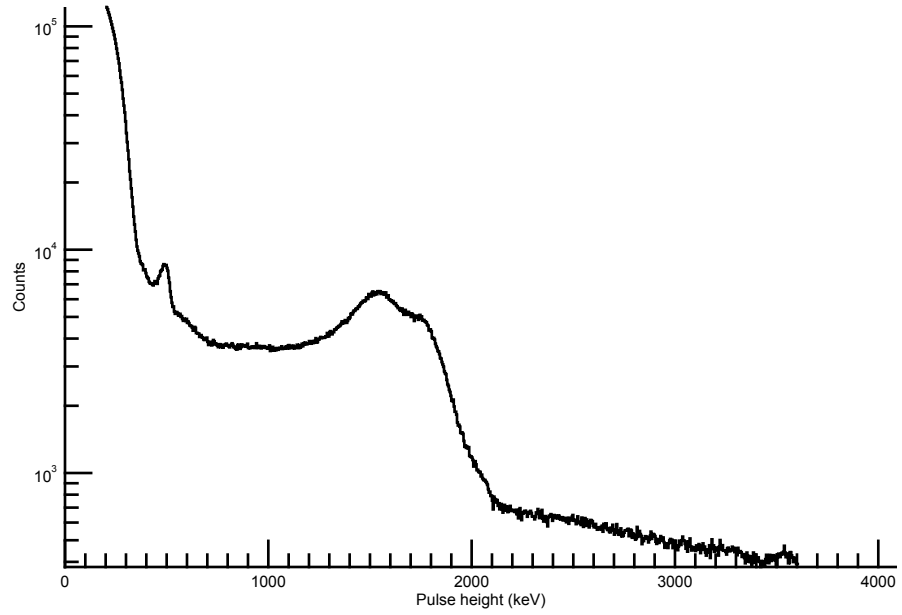
CAT10 pulse height spectrum: CZT14



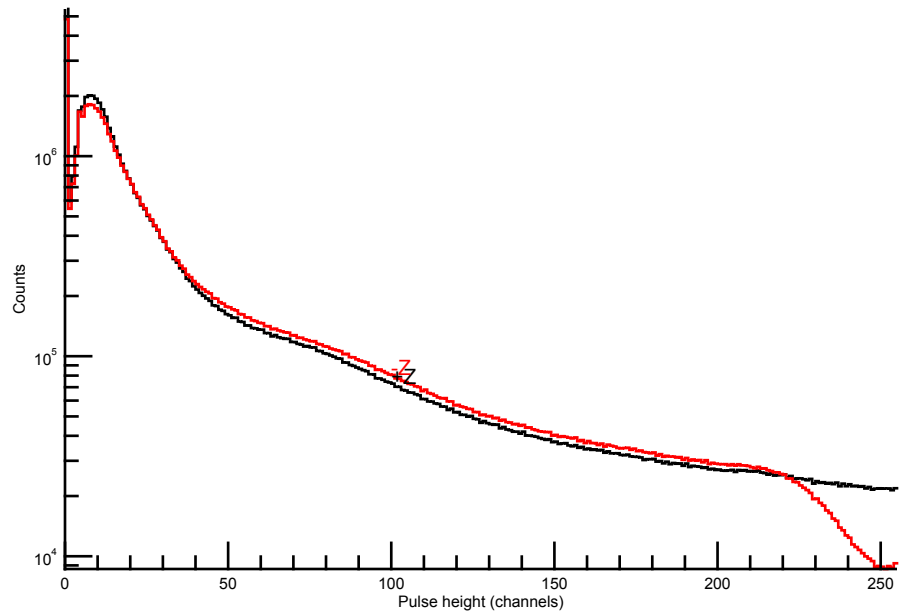
CAT10 pulse height spectrum: CZT4



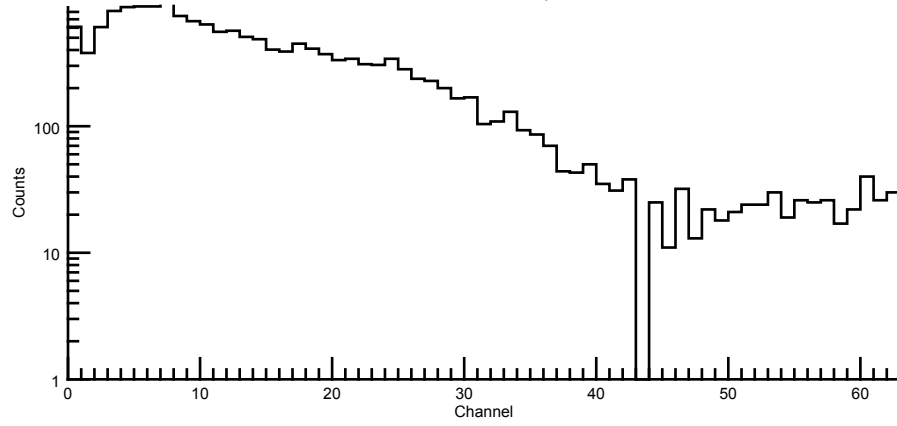
CAT10 CZT composite



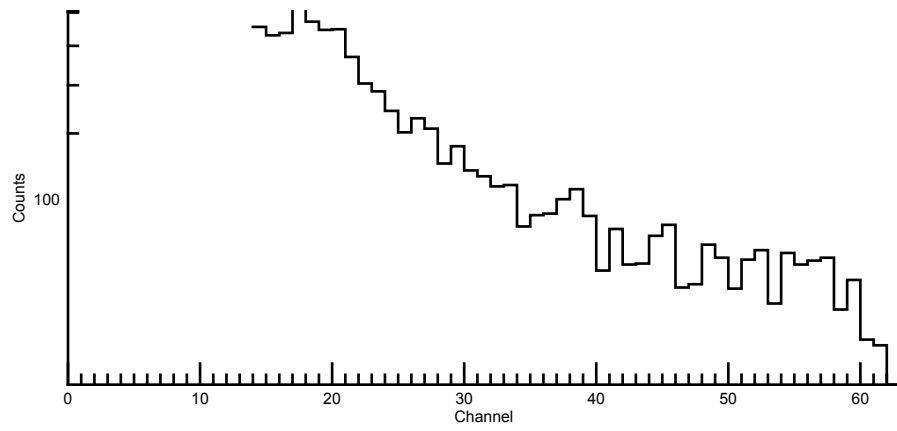
CAT1 histograms



+Z BLP CAT4 first pulse



+Z BLP CAT4 second pulse



+Z BLP CAT4 time to second pulse

