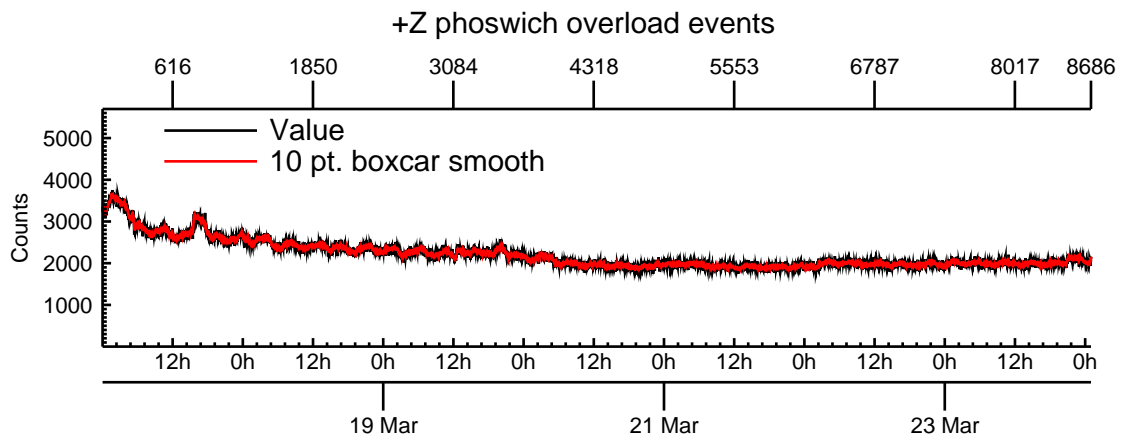
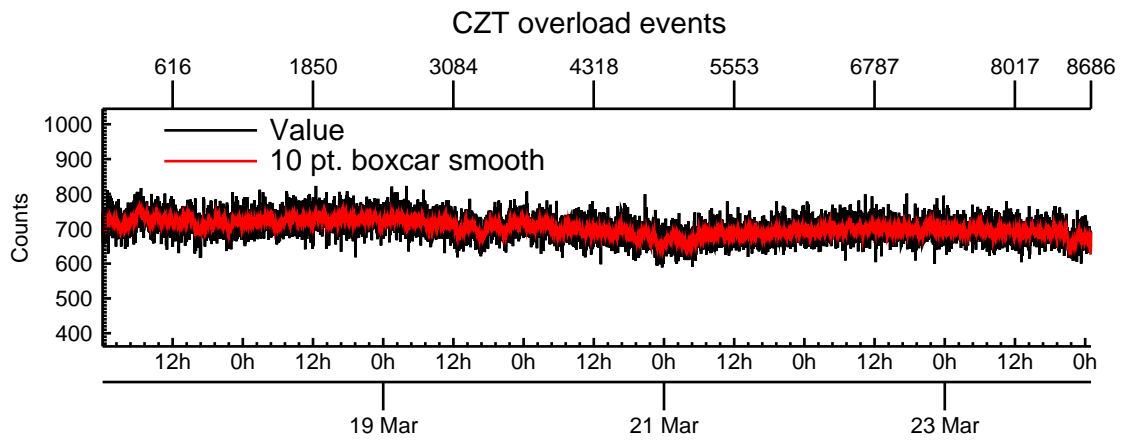
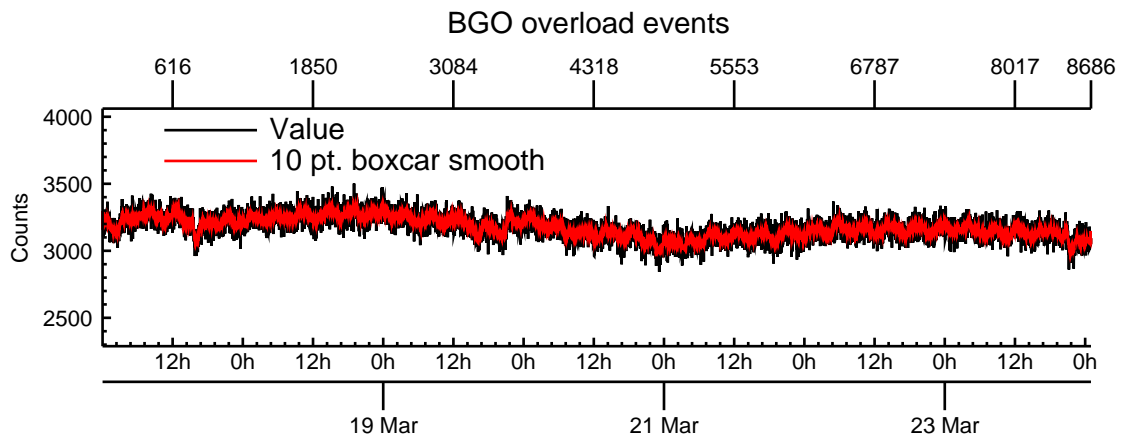
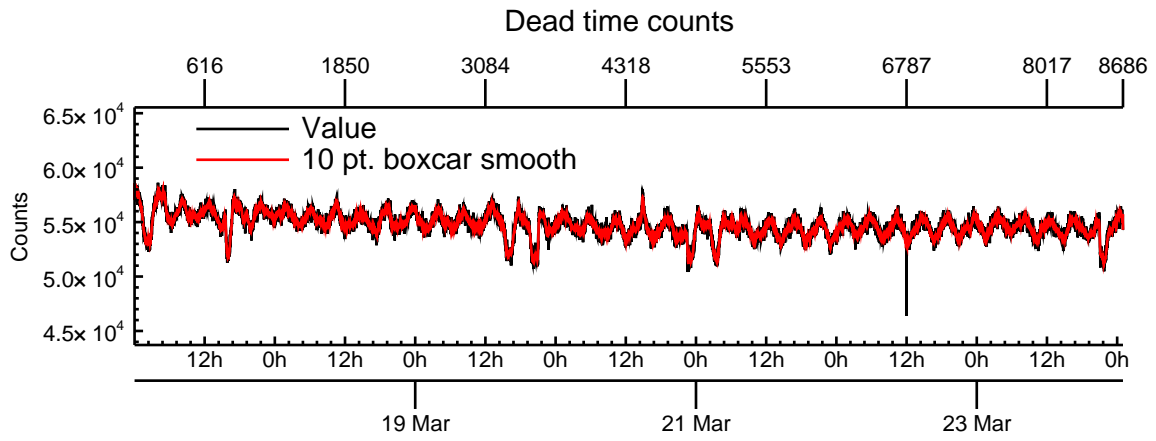
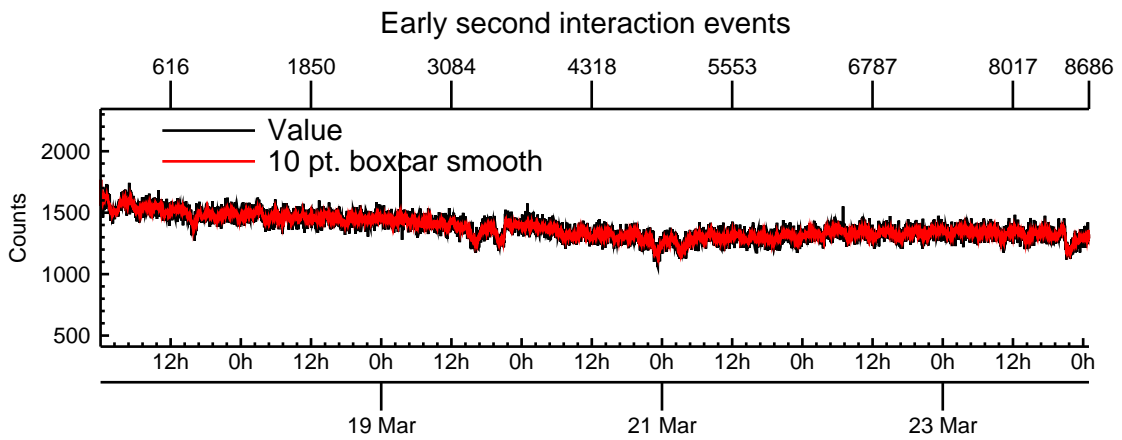
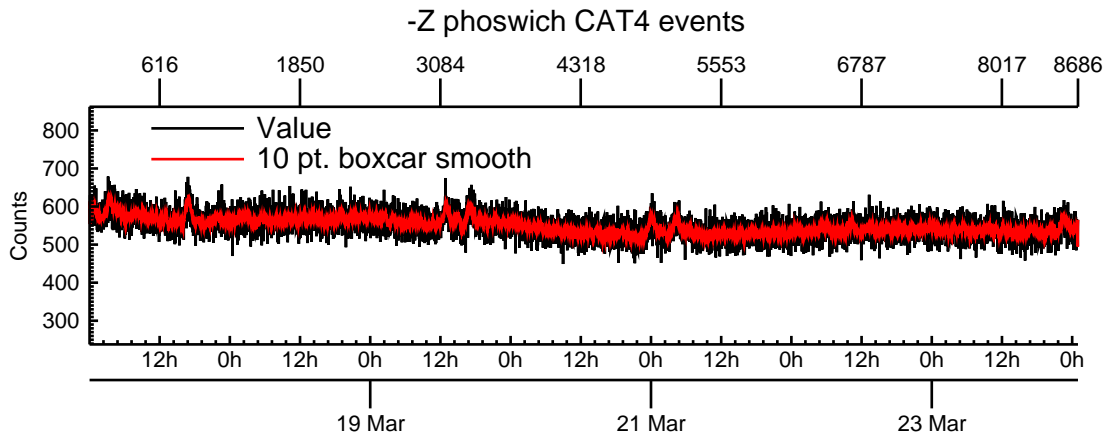
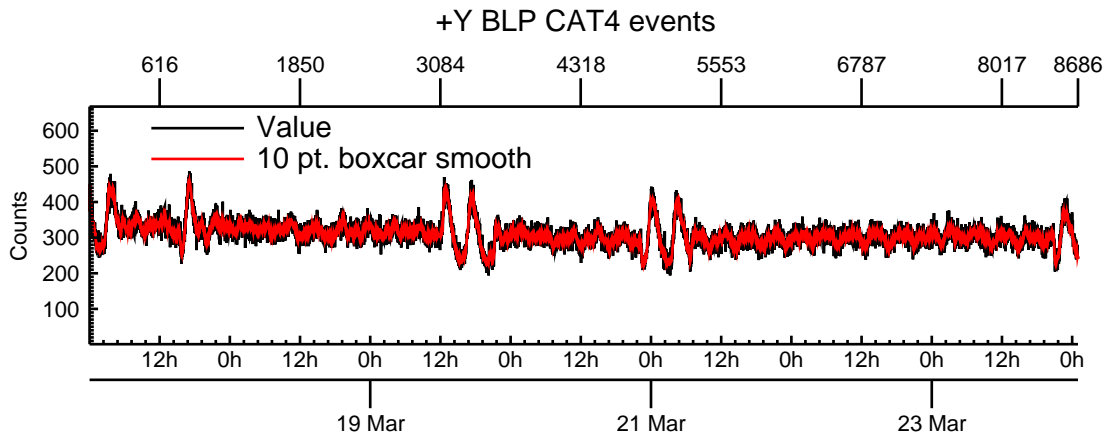
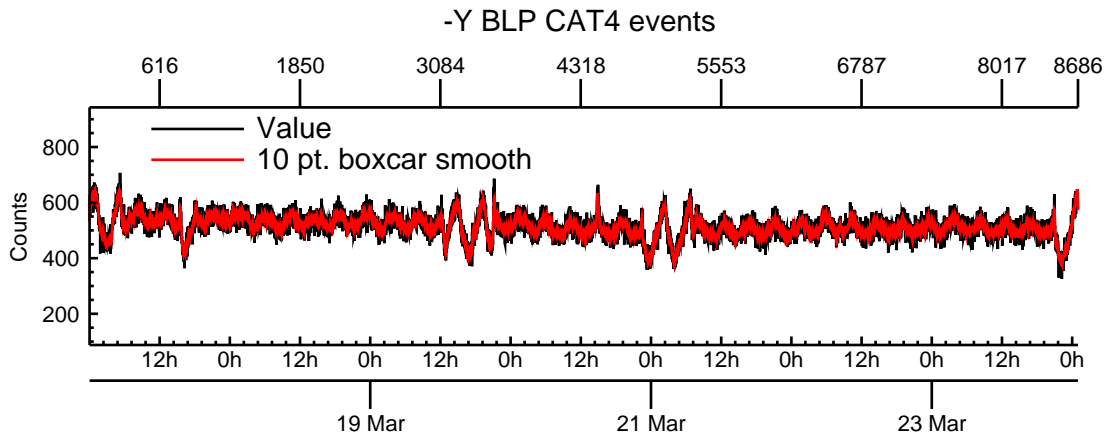


NASA Dawn Mission
GRaND@Vesta Browse Charts
 GRD-L1A-120317-120324_130628

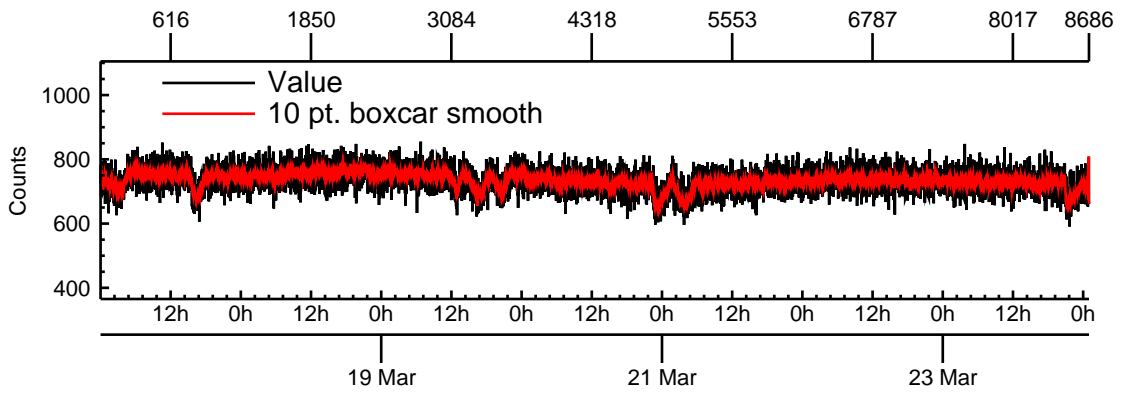
- Number of science records: 8687
 92 missing science packets with 1 gaps.
 Start/End: 2012-03-17T00:00:48 to 2012-03-24T00:59:08
- Number of SOH records: 17383
 0 missing SOH packets with 0 gaps.
 Start/End: 2012-03-17T00:00:13 to 2012-03-24T00:59:13
- Comments: Browse charts.
 - Provides an overview of data contained within this directory.
 - Refer to the .STA file for detailed state information.
 - The energy scale for calibrated spectra may not be accurate.
- Number of states = 1
- Instrument settings for first state (STATE_INDEX 0):

TELREADOUT	70	NEMG_TOT_EVTS	3876
TELSOH	35	NEMG_CZT_EVTS	3376
MODE	1	NEMN_TOT_EVTS	2800
HVPS1	1	L_BGO_CW	7
HVPS1_SET	180	H_BGO_CW	25
HVPS2	1	L_BGO_ROI	1
HVPS2_SET	170	H_BGO_ROI	64
HVPS3	1	L_BLP_MY_CW	1
HVPS3_SET	175	H_BLP_MY_CW	64
HVPS4	1	L_BLP_MY_ROI	1
HVPS4_SET	180	H_BLP_MY_ROI	64
HVPS5	1	L_BLP_PY_CW	1
HVPS5_SET	125	H_BLP_PY_CW	64
HVPS6	1	L_BLP_PY_ROI	1
HVPS6_SET	170	H_BLP_PY_ROI	64
PM5_LVPS	1	L_BLP_MZ_CW	1
P12_LVPS	1	H_BLP_MZ_CW	64
HEATERS_ENABLE	0	L_BLP_MZ_ROI	1
CZT_PM5_LVPS	1	H_BLP_MZ_ROI	64
CZT_ENABLES		L_BLP_PZ_CW	1
0010001000000010		H_BLP_PZ_CW	64
		L_BLP_PZ_ROI	1
		H_BLP_PZ_ROI	64

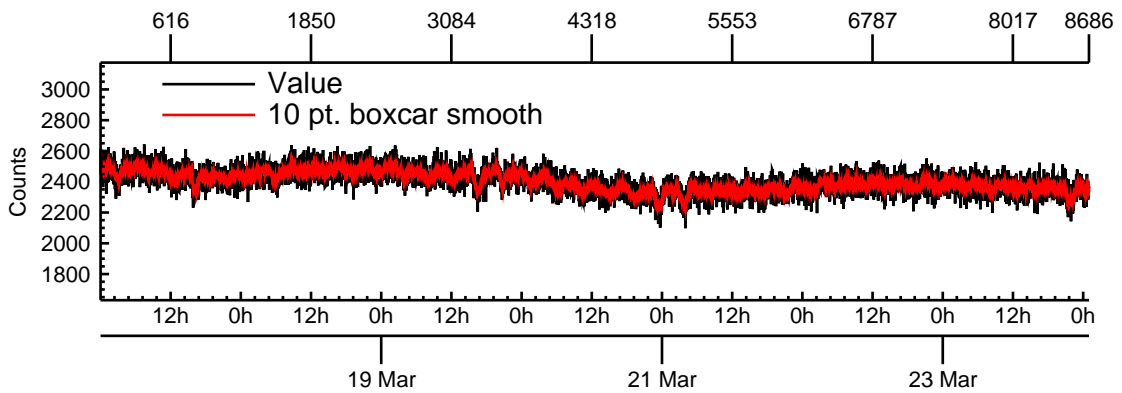




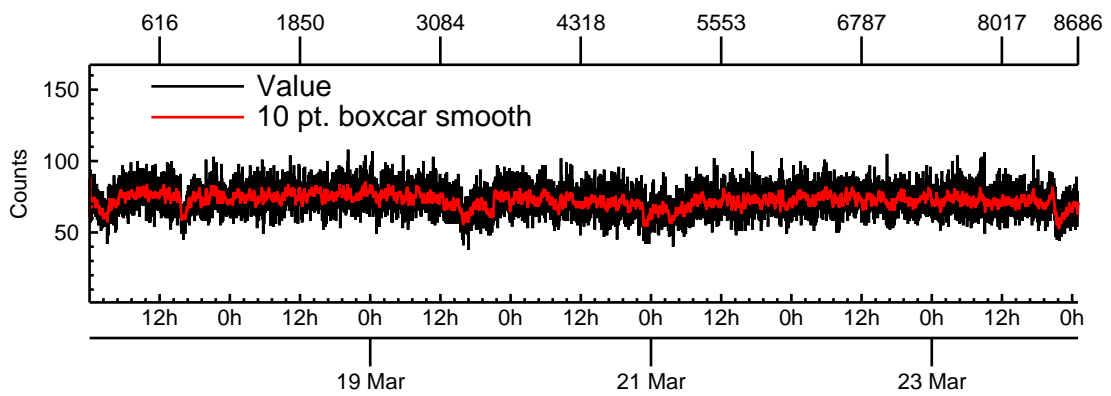
Multiple-crystal CZT events



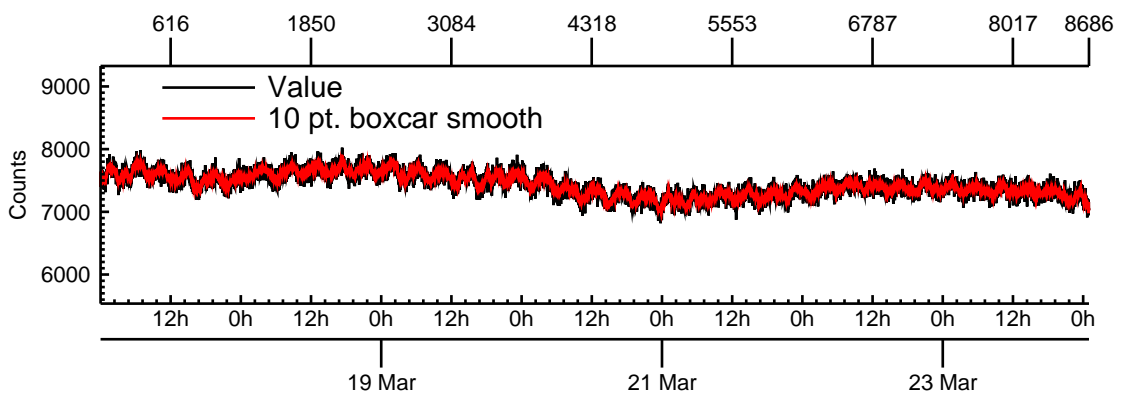
Valid CZT events (CAT10)

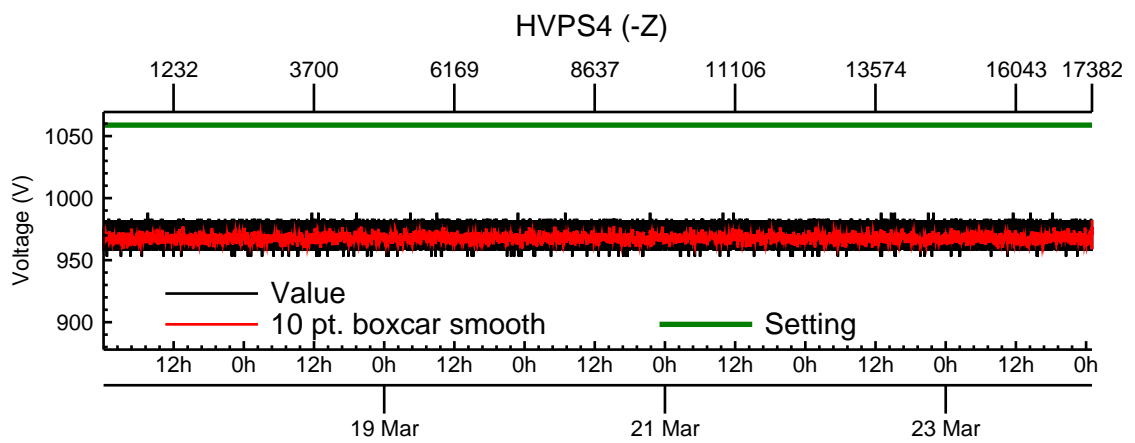
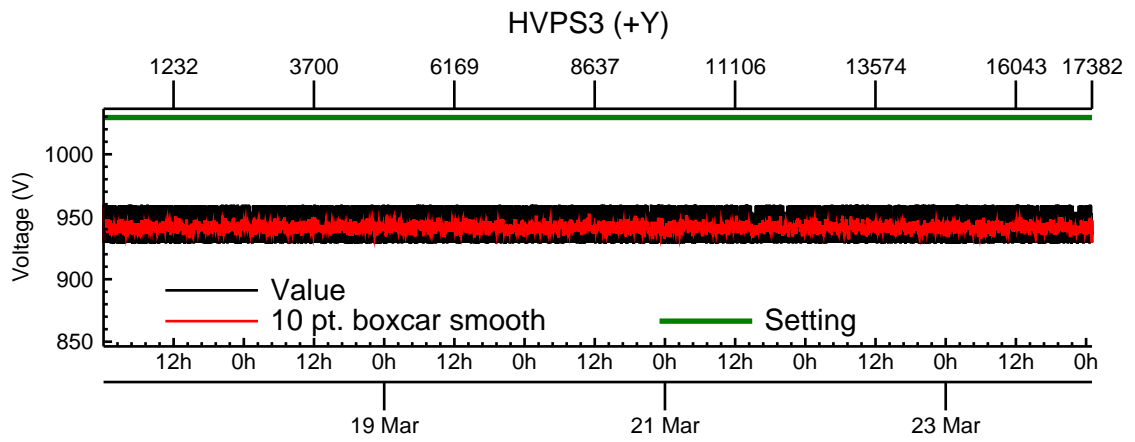
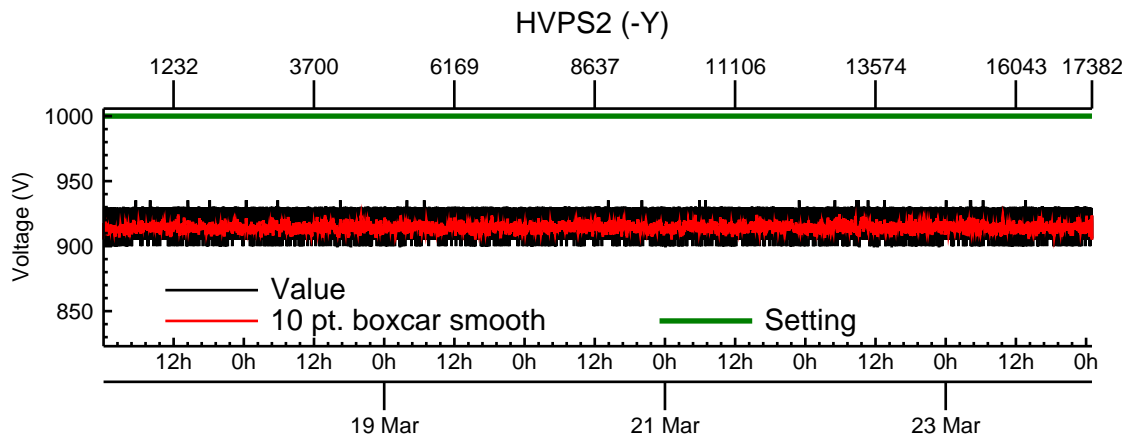
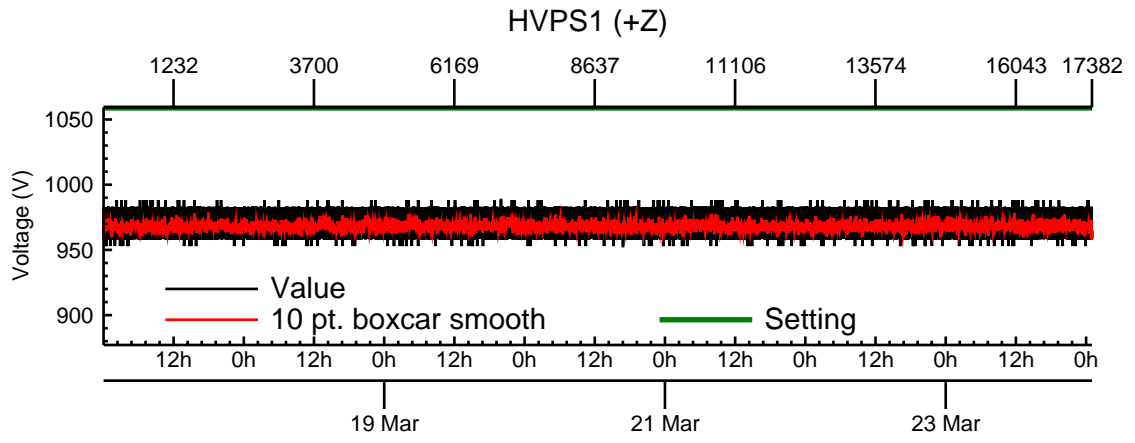


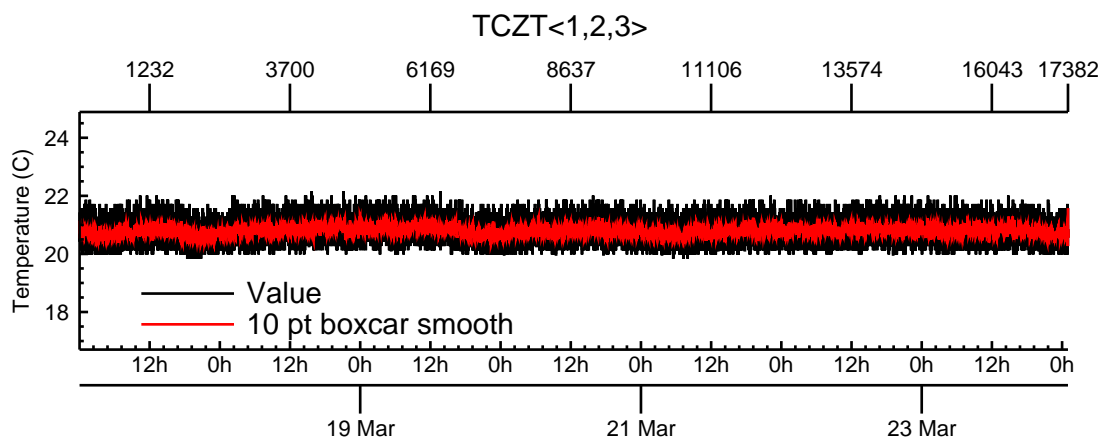
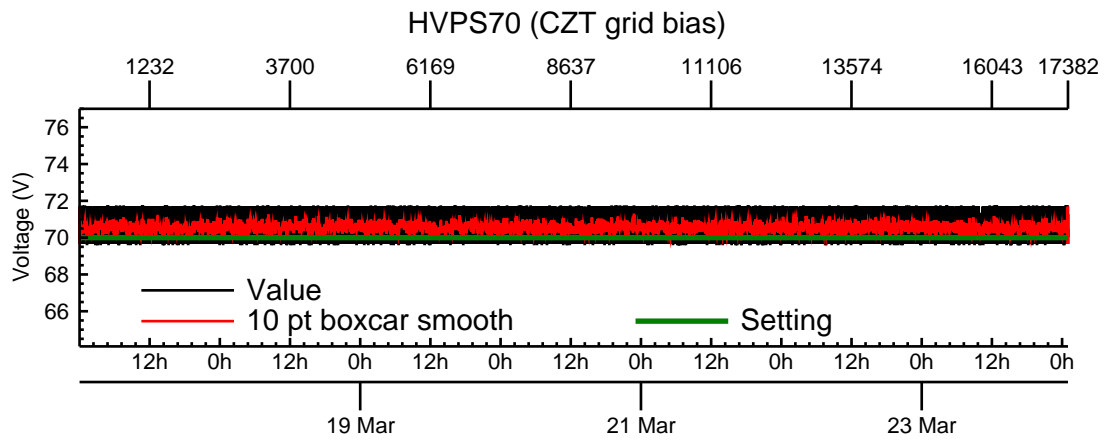
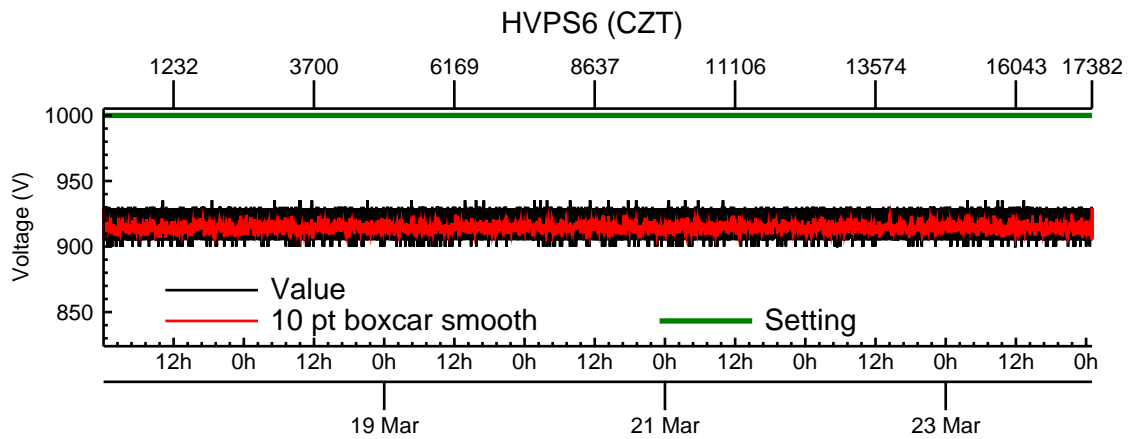
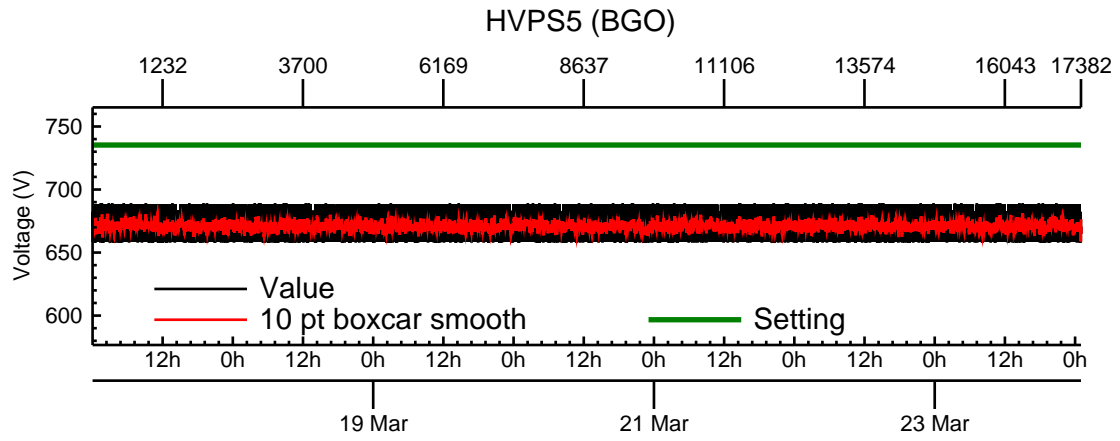
Coincidence BGO and CZT events (CAT7)

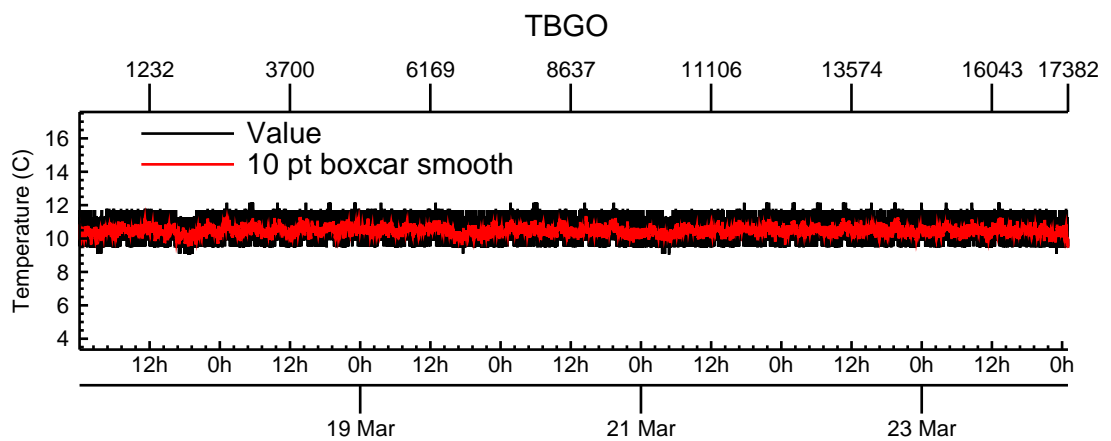
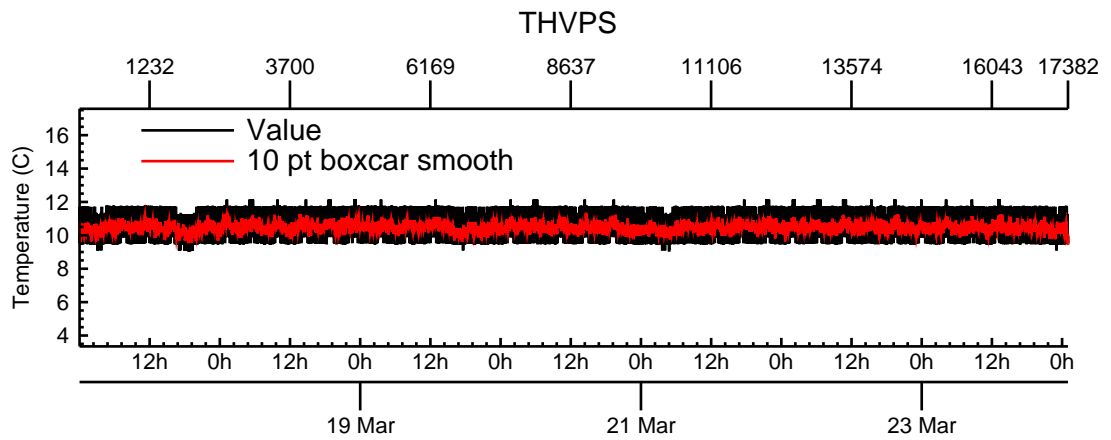
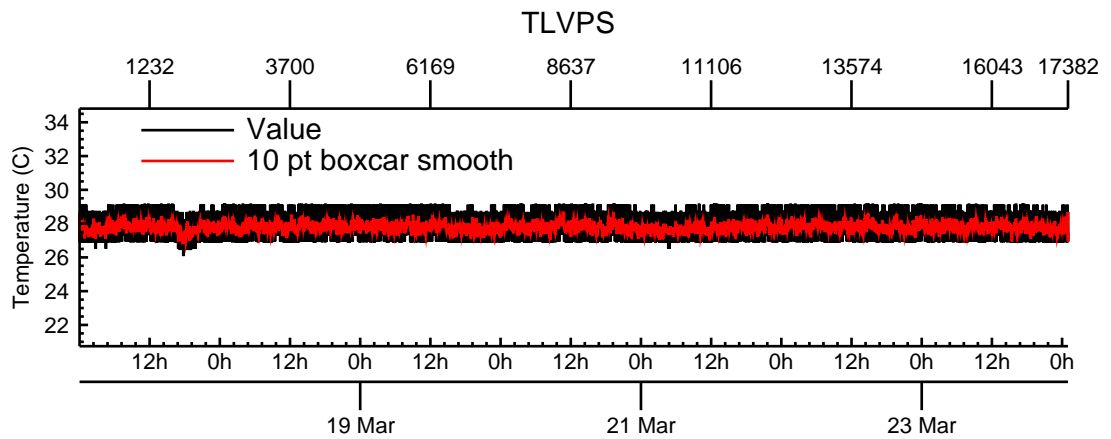
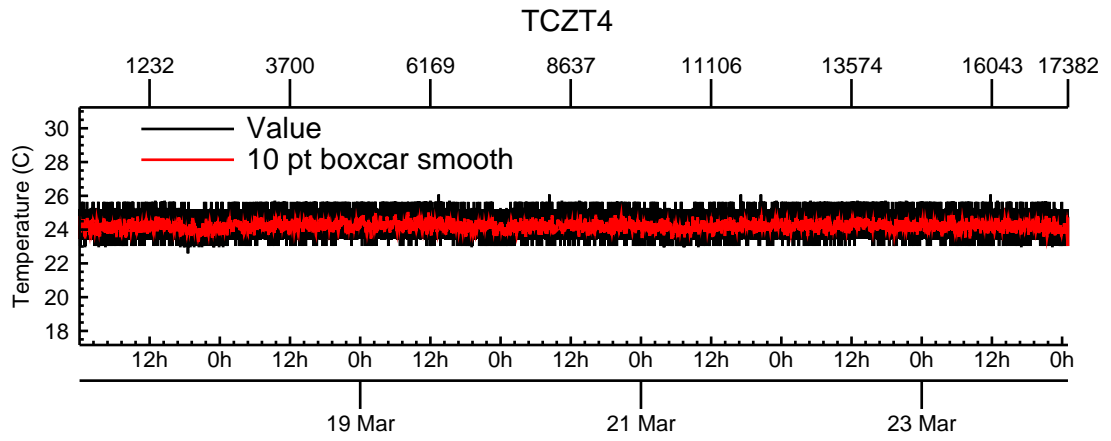


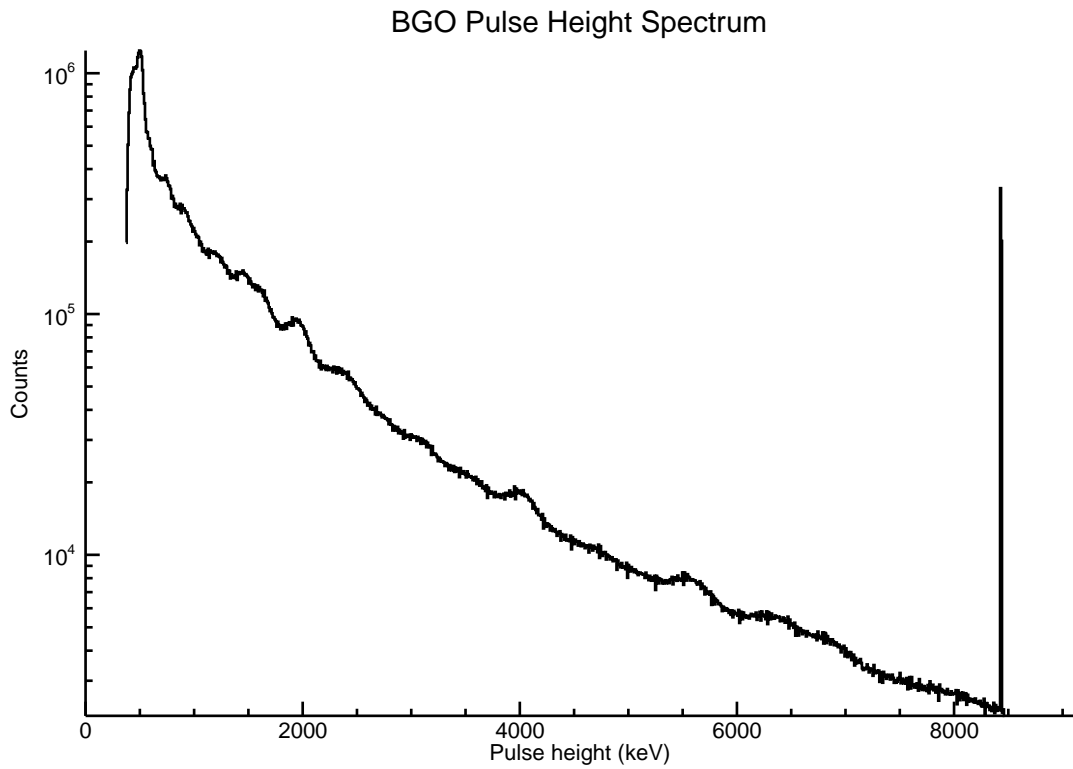
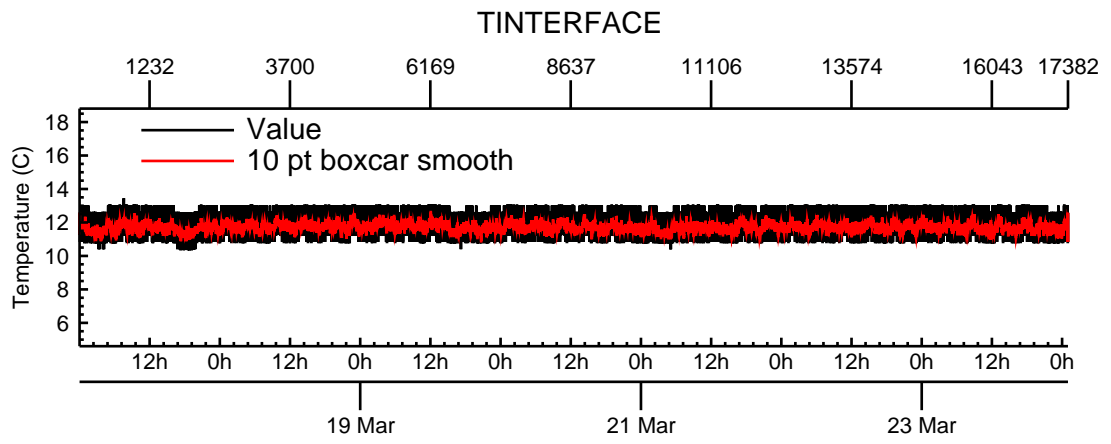
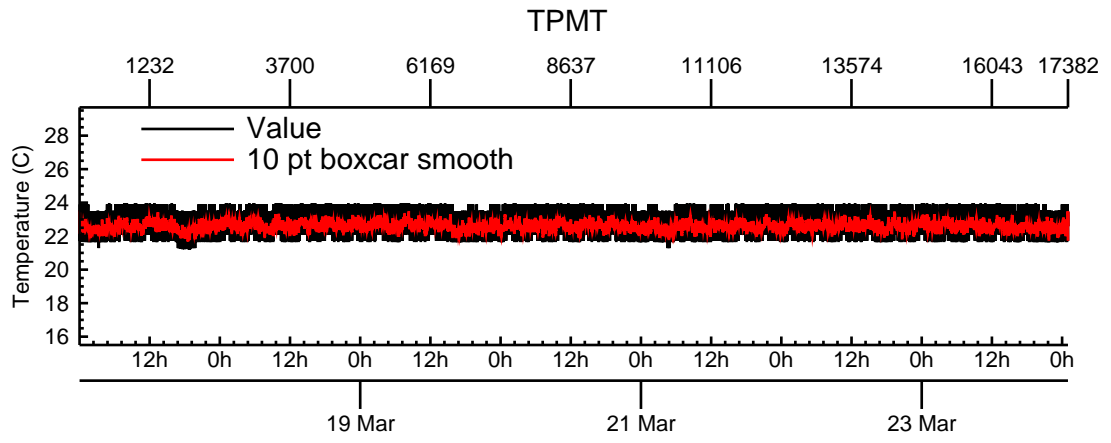
Coincidence of three or more sensor elements



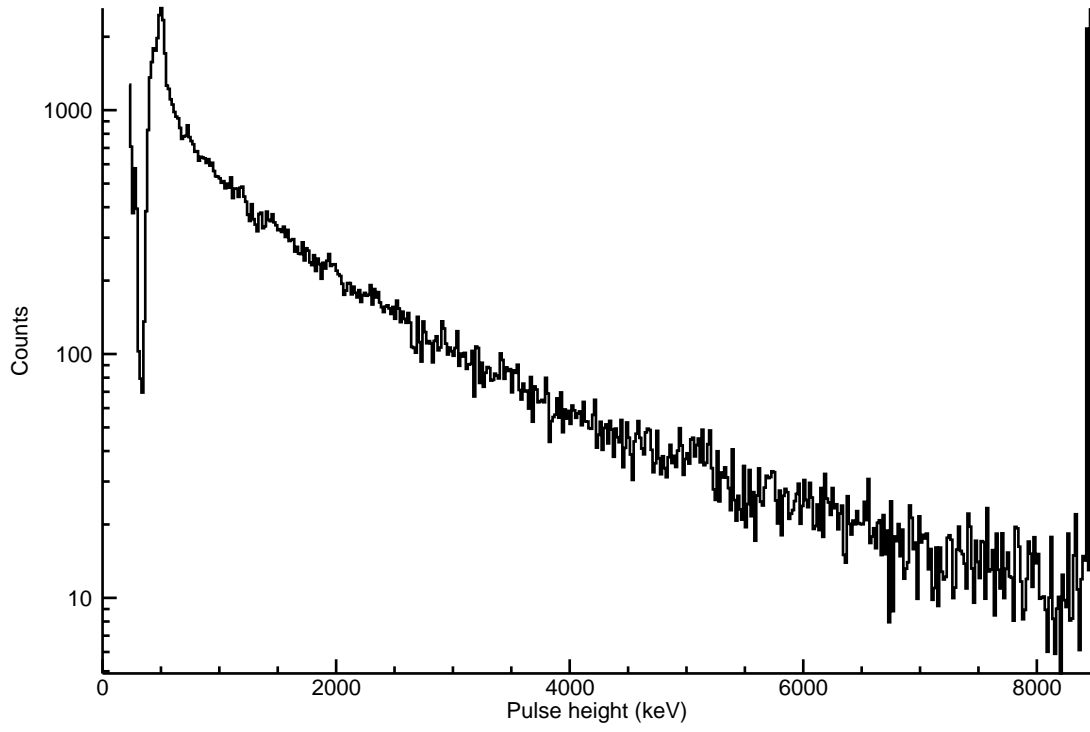




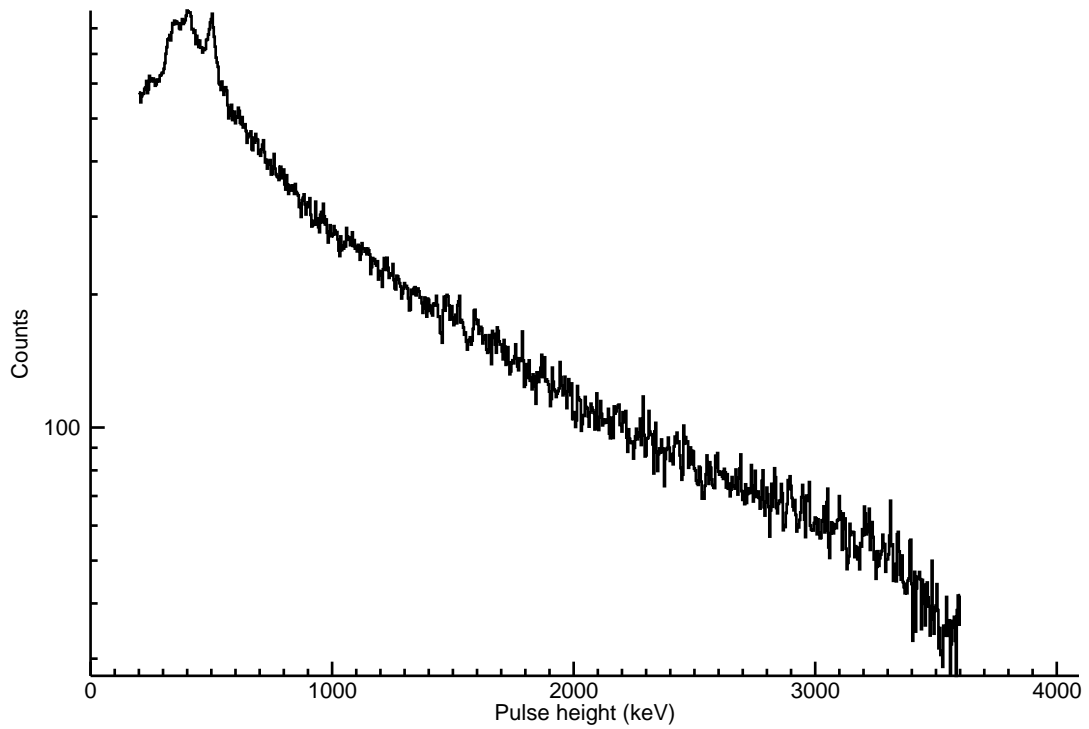




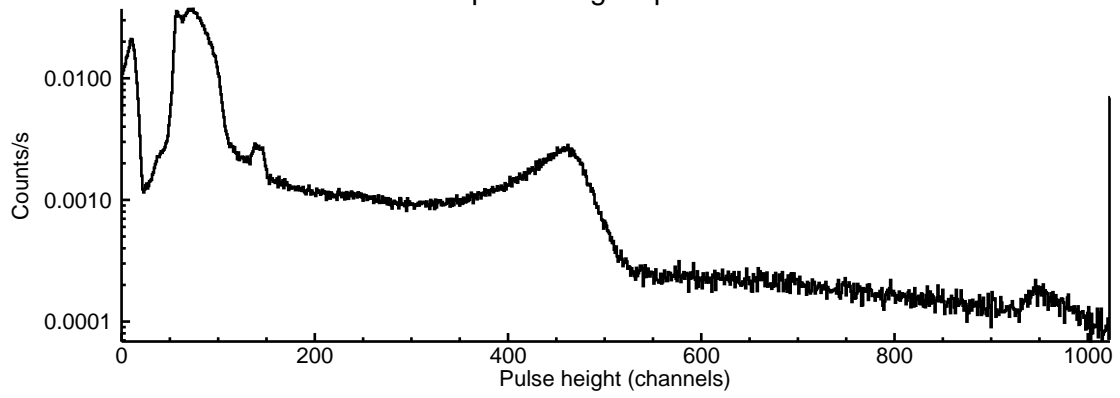
BGO-CZT pair spectrum: BGO



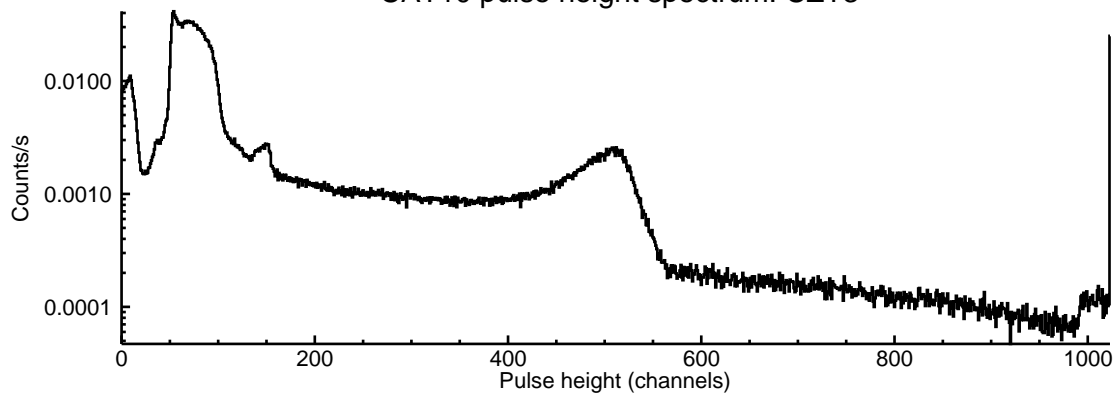
BGO-CZT pair spectrum: CZT



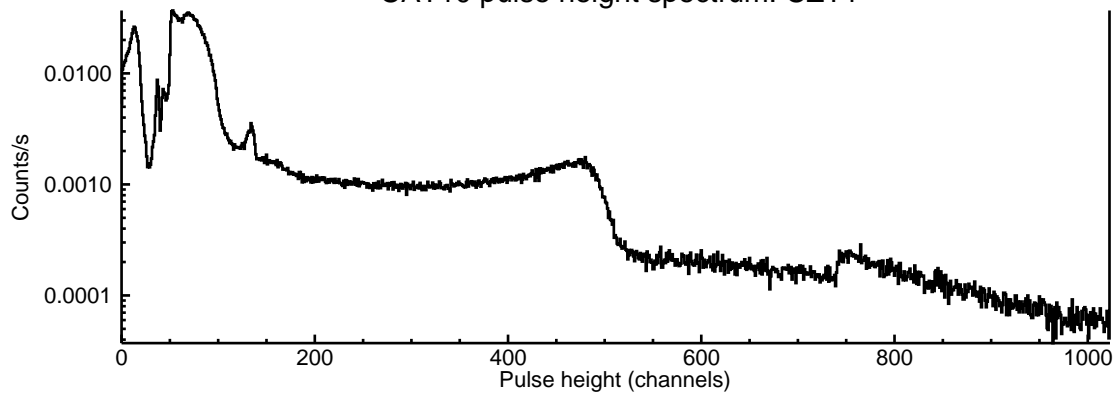
CAT10 pulse height spectrum: CZT11



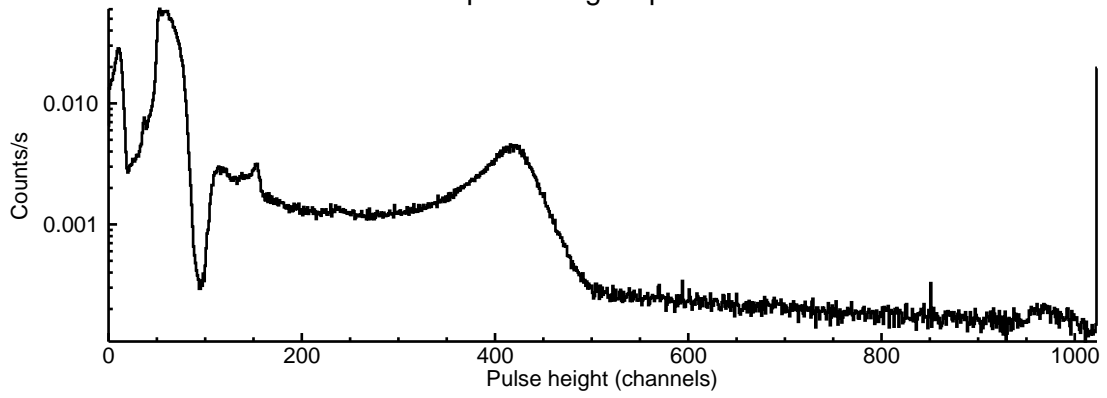
CAT10 pulse height spectrum: CZT3



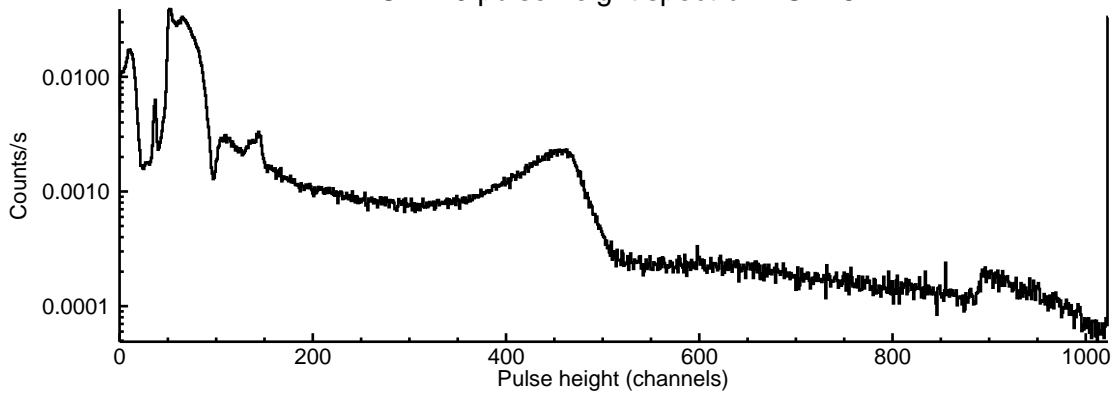
CAT10 pulse height spectrum: CZT1



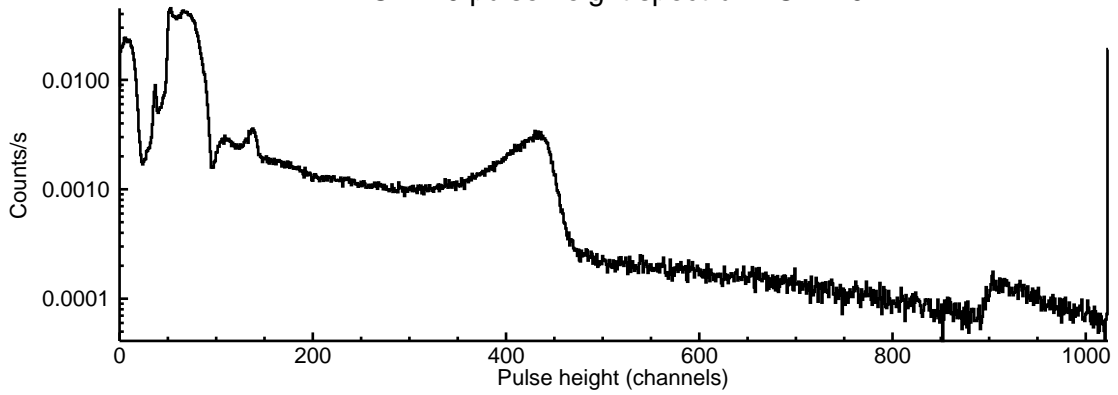
CAT10 pulse height spectrum: CZT2



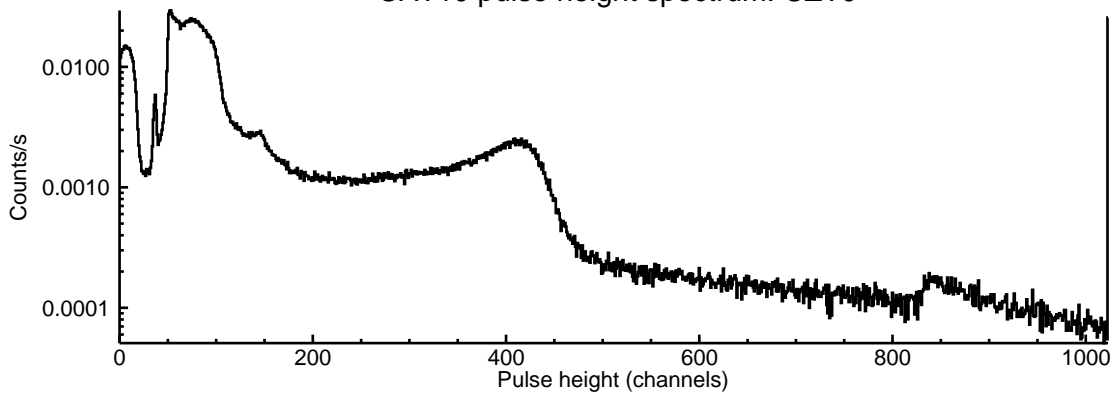
CAT10 pulse height spectrum: CZT8



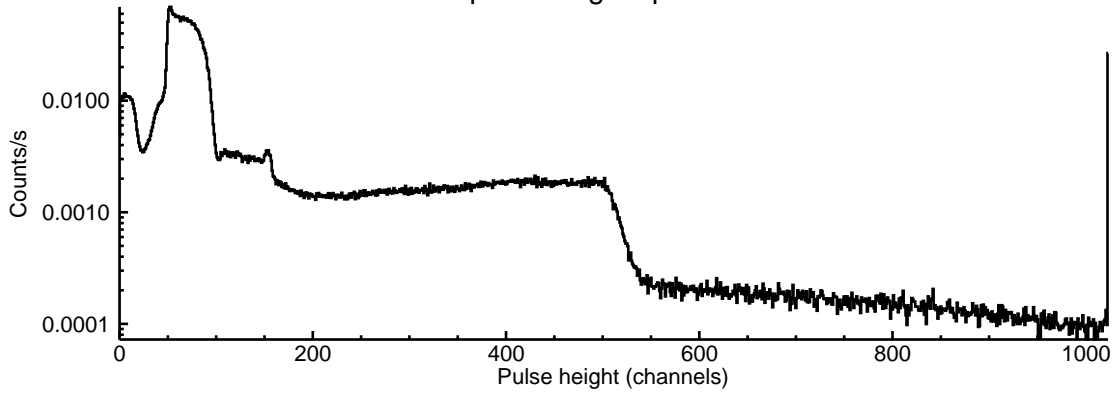
CAT10 pulse height spectrum: CZT10



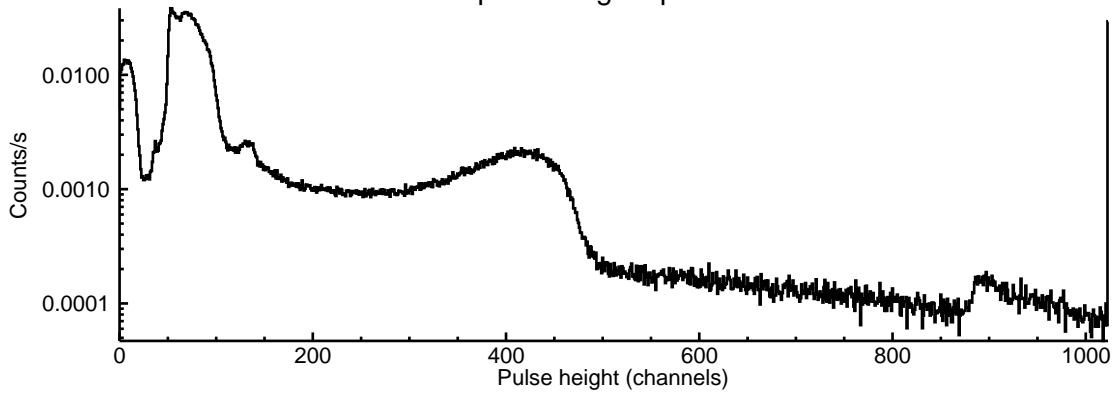
CAT10 pulse height spectrum: CZT0



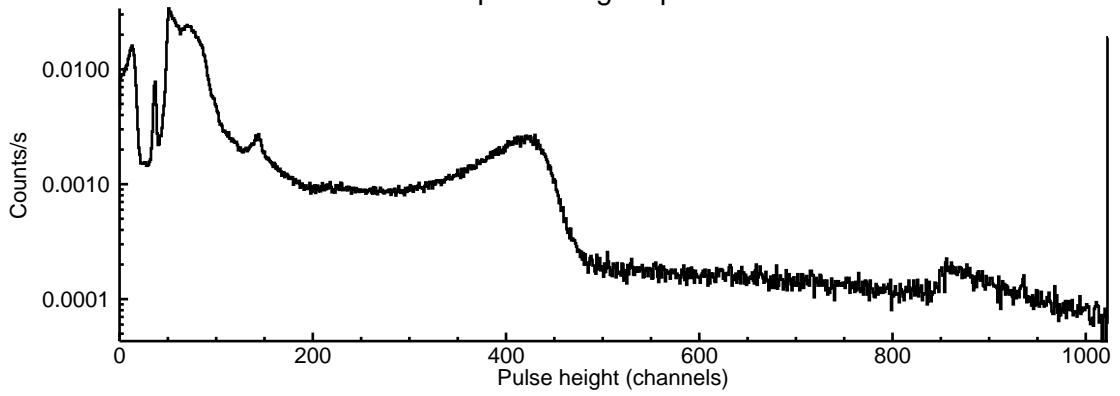
CAT10 pulse height spectrum: CZT15

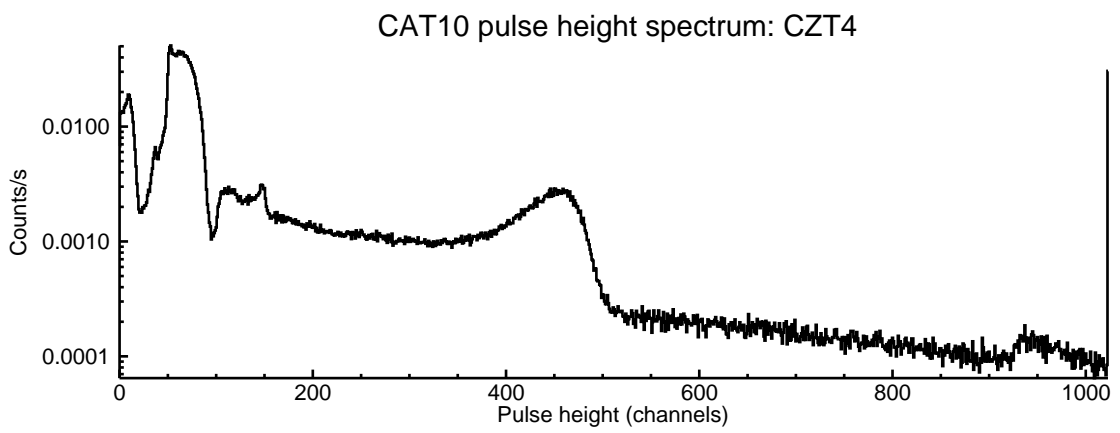
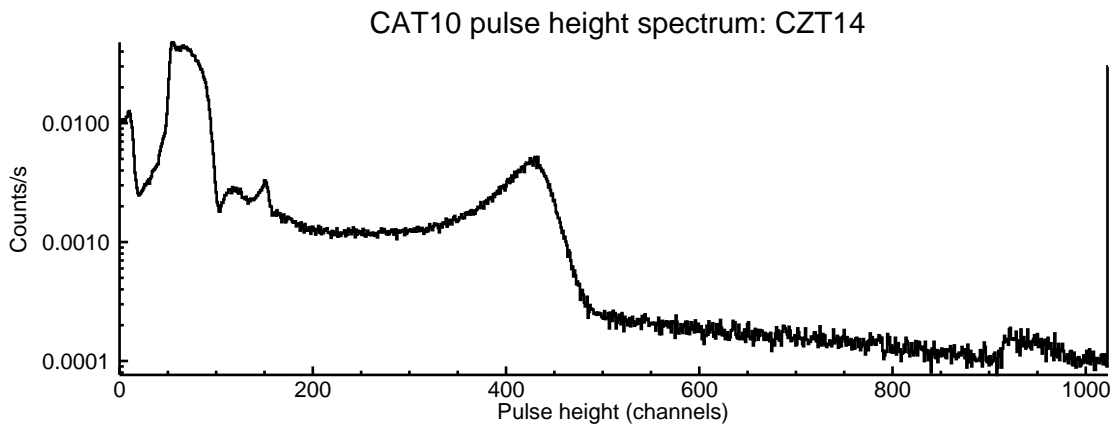
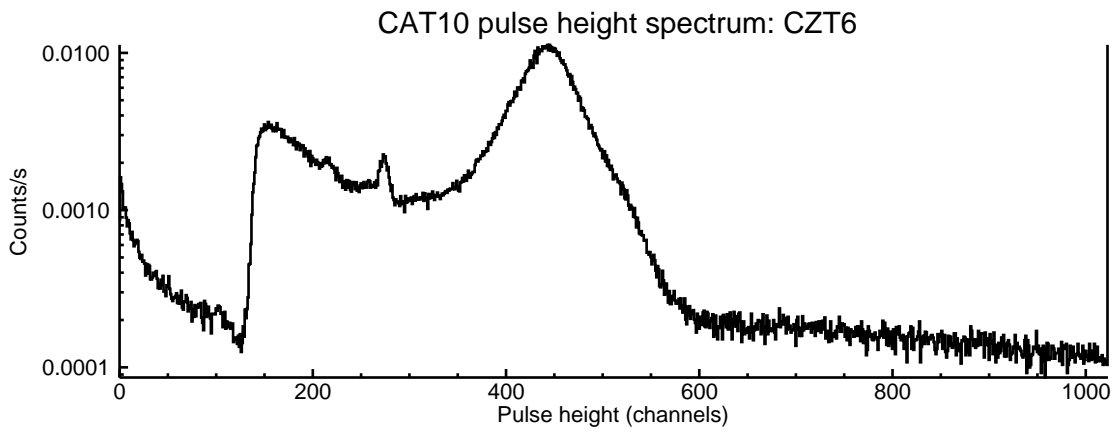


CAT10 pulse height spectrum: CZT7

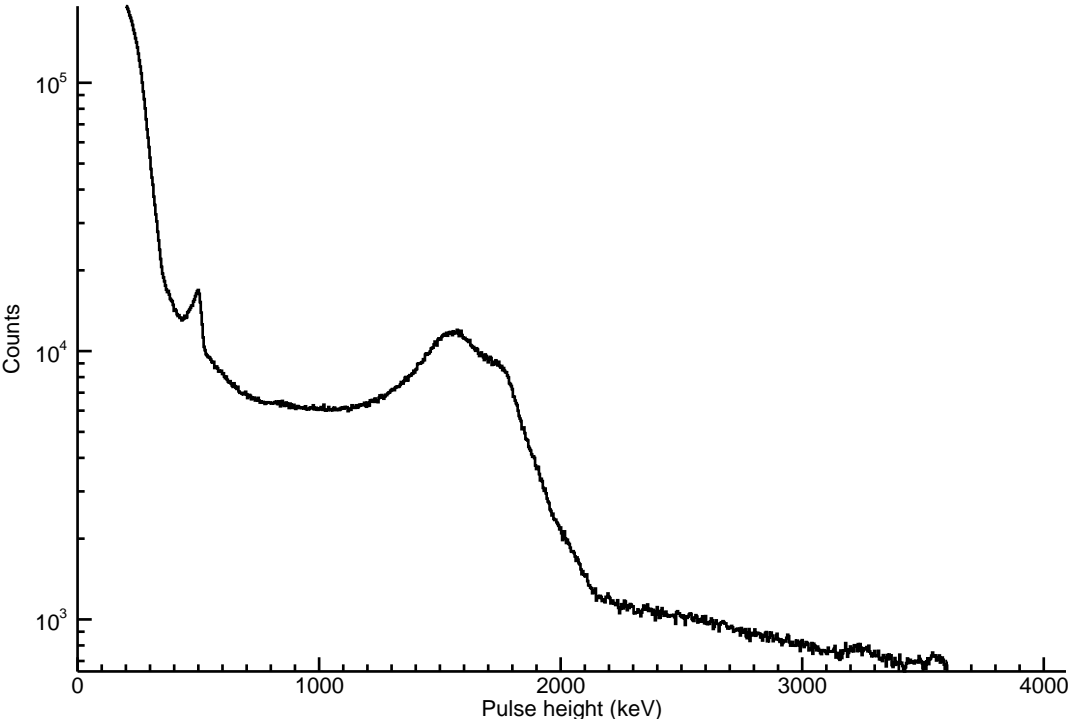


CAT10 pulse height spectrum: CZT5

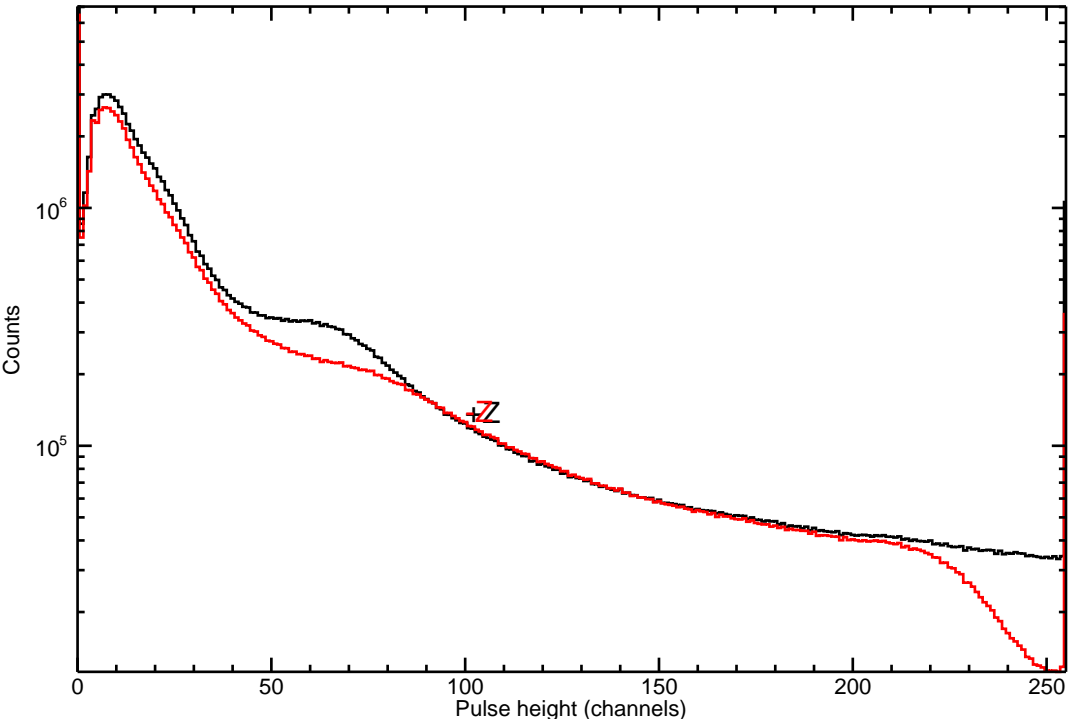




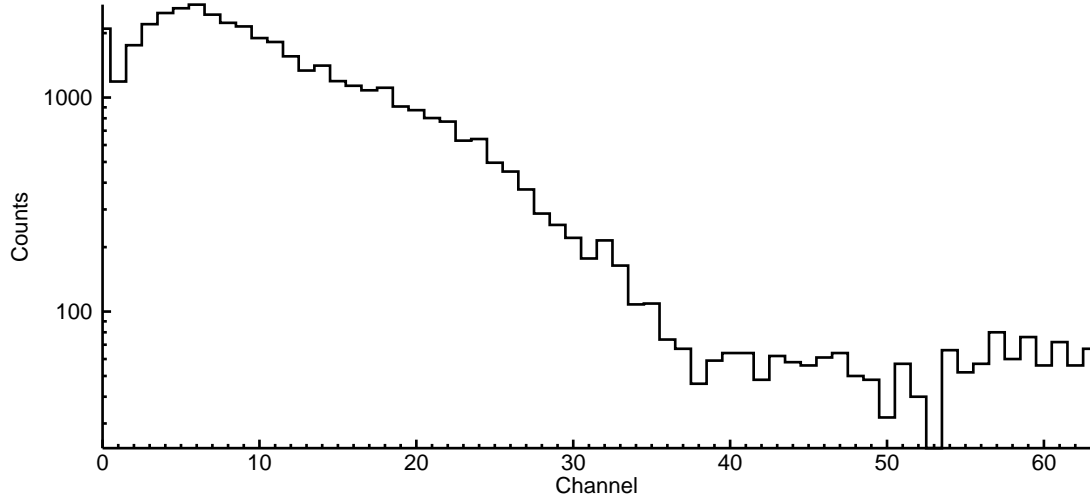
CAT10 CZT composite



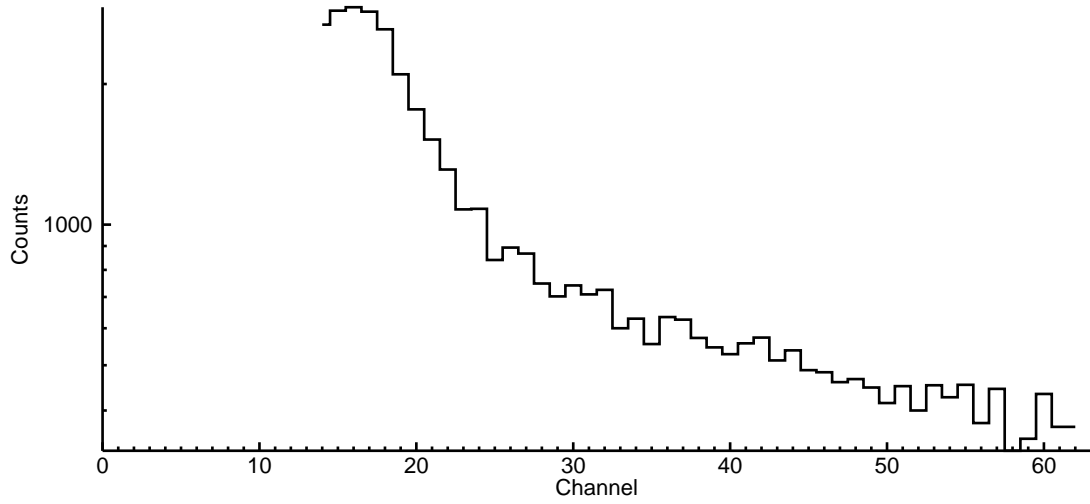
CAT1 histograms



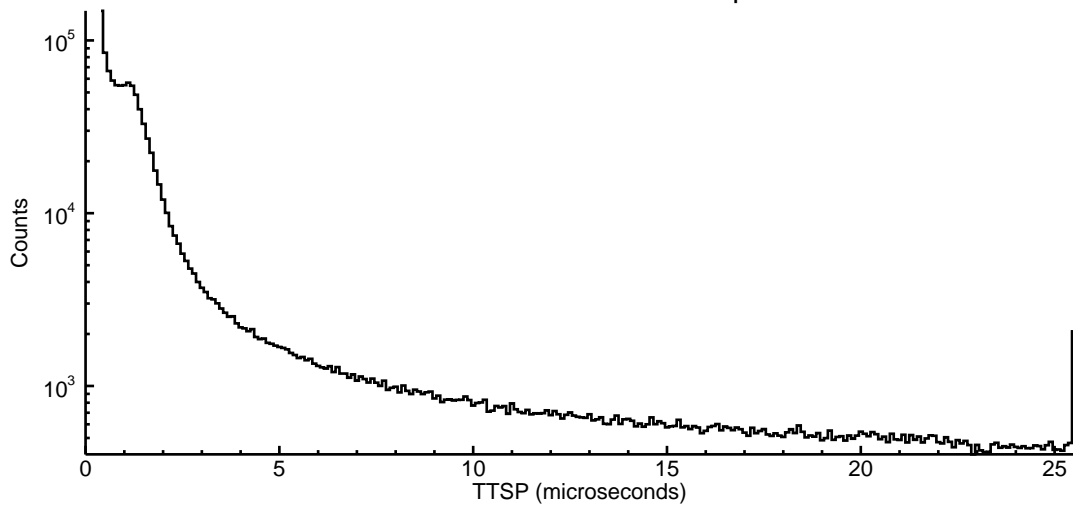
+Z BLP CAT4 first pulse



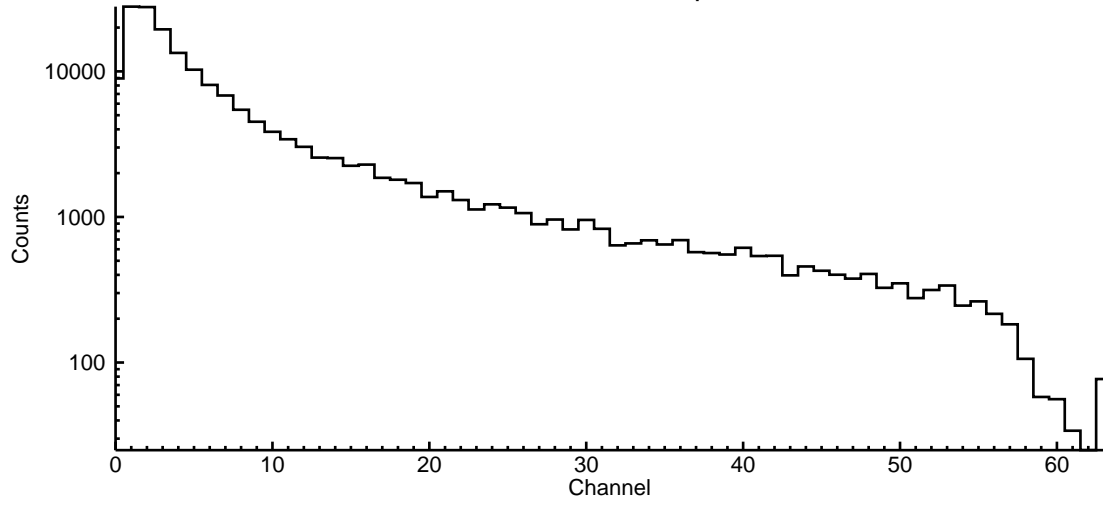
+Z BLP CAT4 second pulse



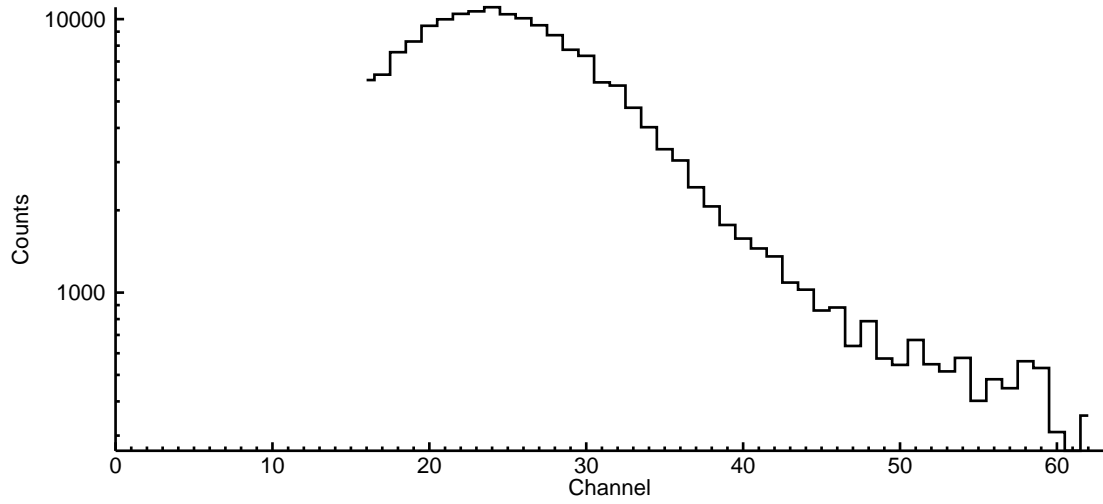
+Z BLP CAT4 time to second pulse



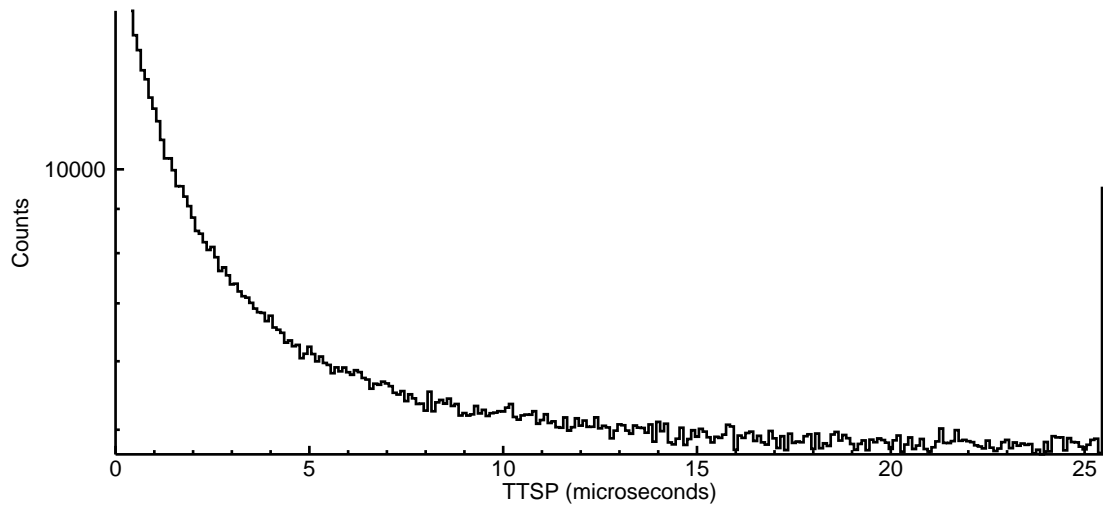
-Y BLP CAT4 first pulse

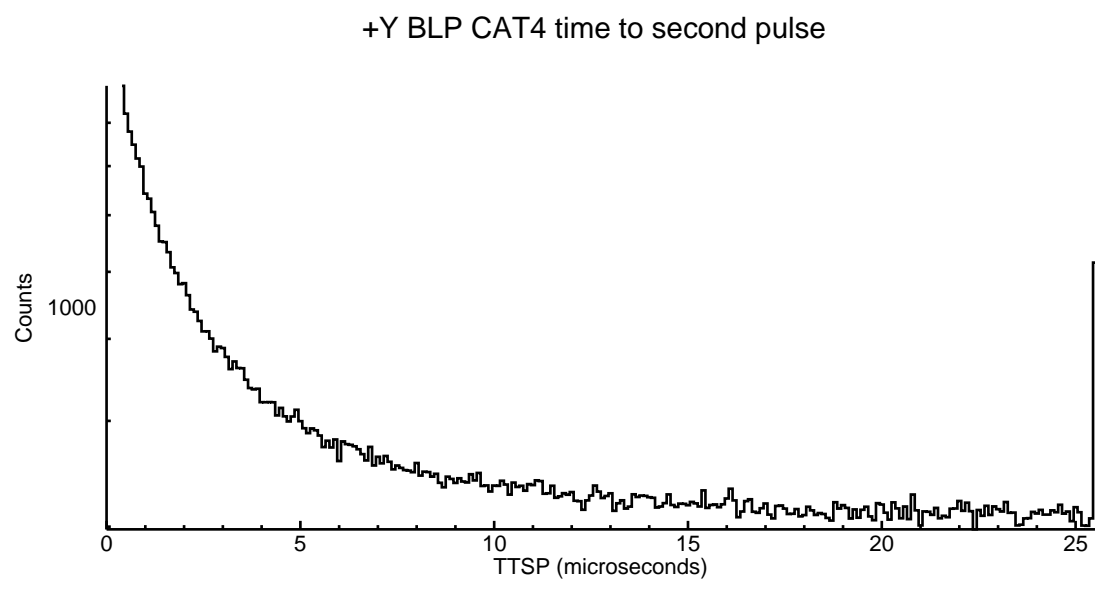
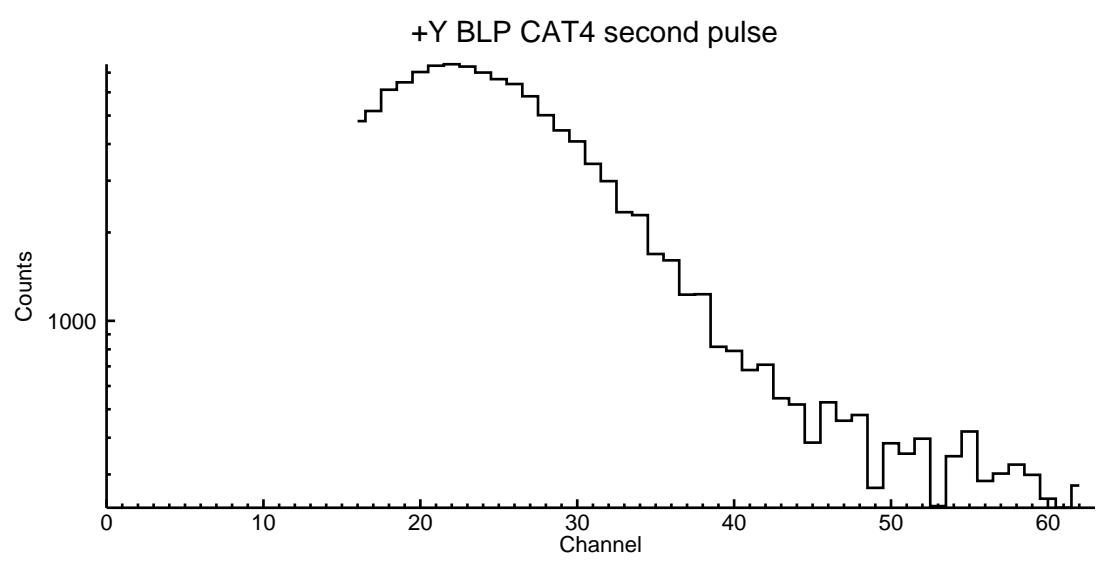
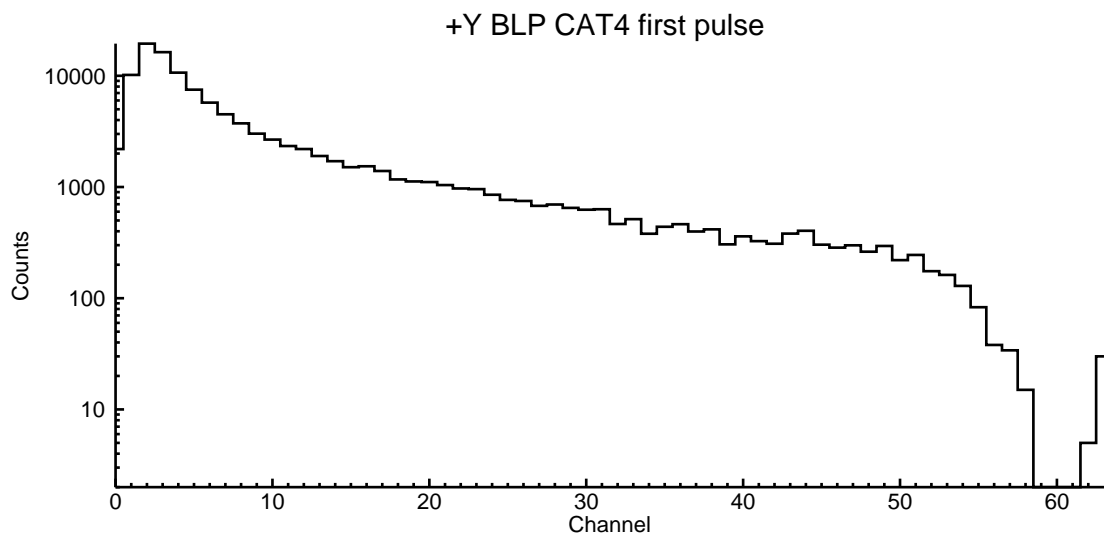


-Y BLP CAT4 second pulse

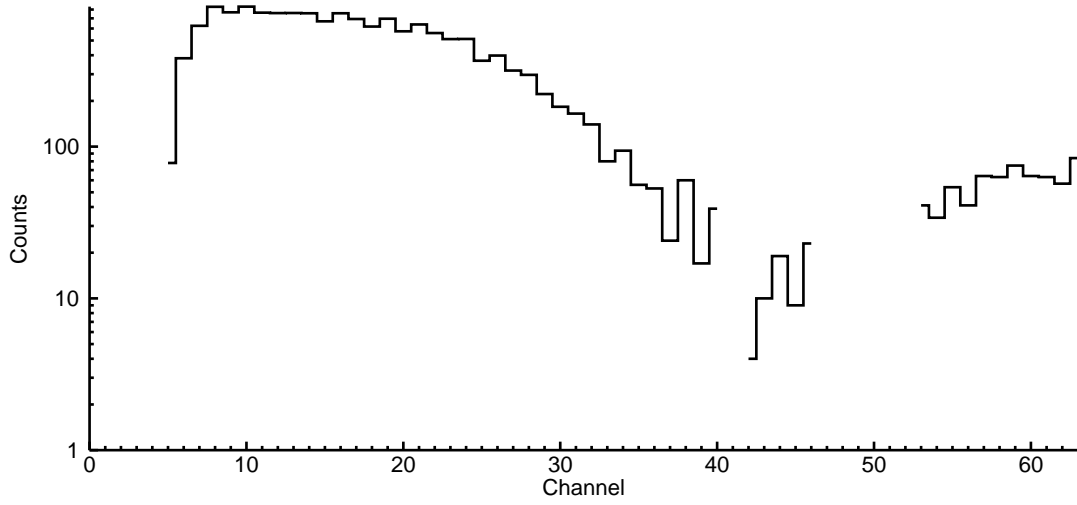


-Y BLP CAT4 time to second pulse

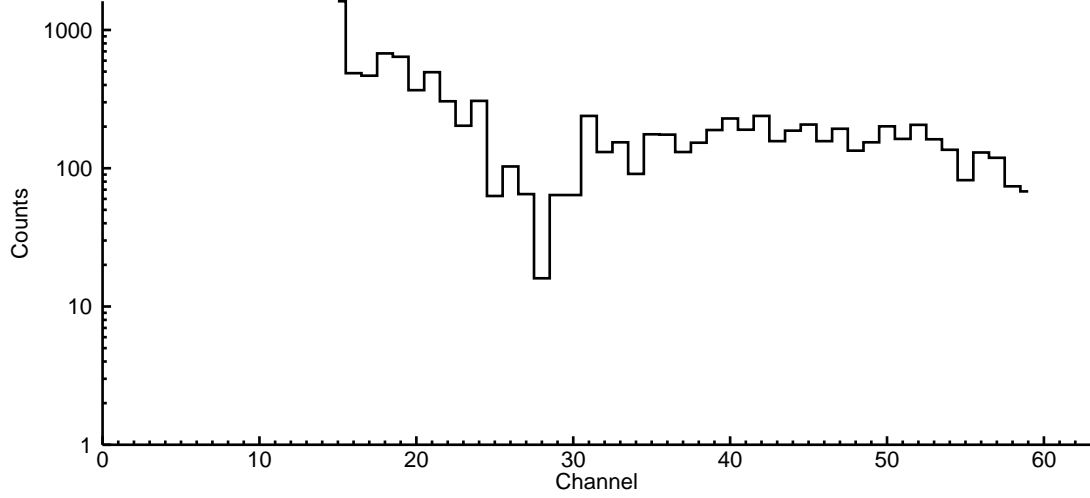




-Z BLP CAT4 first pulse



-Z BLP CAT4 second pulse



-Z BLP CAT4 time to second pulse

