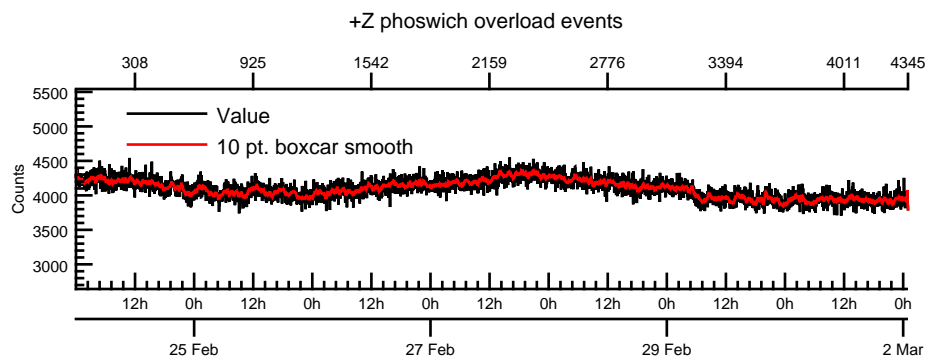
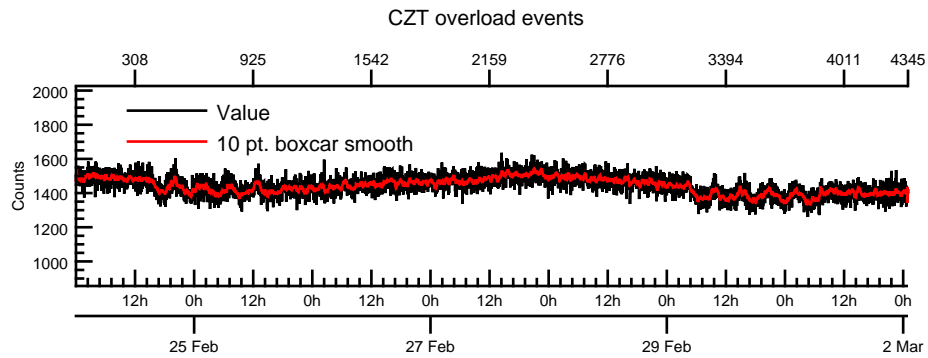
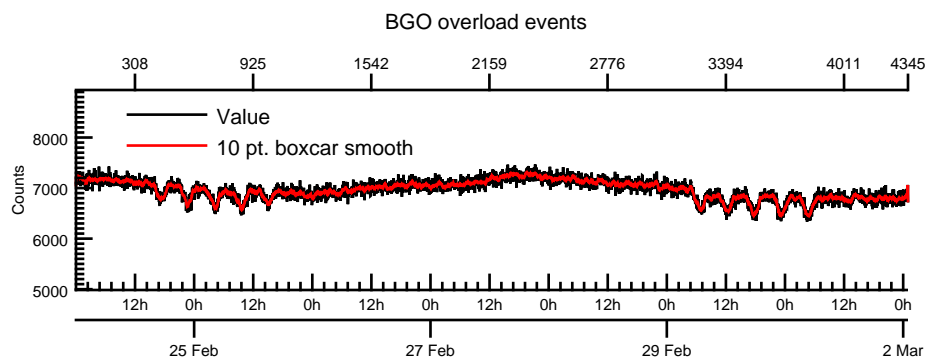
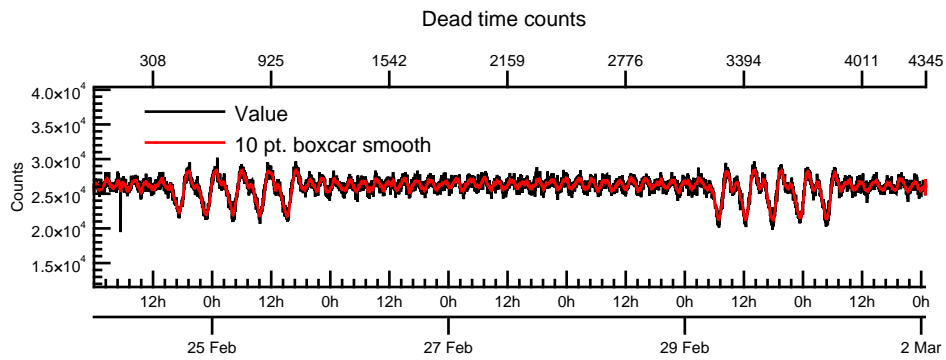


NASA Dawn Mission  
**GRaND@Ceres Browse Charts**  
 Ceres CSL DA903 16055\_0

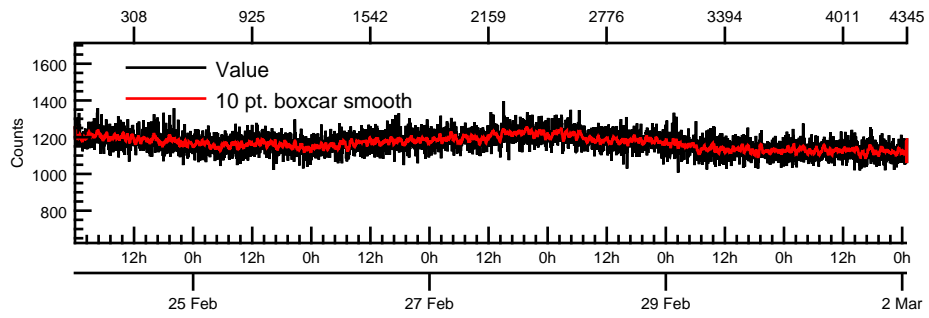
- Number of science records: 4346  
 0 missing science packets with 0 gaps.  
 Start/End: 2016-02-24T00:00:28 to 2016-03-02T00:58:48
- Number of SOH records: 17383  
 0 missing SOH packets with 0 gaps.  
 Start/End: 2016-02-24T00:00:33 to 2016-03-02T00:59:33
- Comments: Browse charts.
  - Provides an overview of data contained within this directory.
  - Refer to the .STA file for detailed state information.
  - The energy scale for calibrated spectra may not be accurate.
  - Missing data count may be in error when power on data are present.

- Number of states = 1
- Instrument settings for first state (STATE\_INDEX 0):

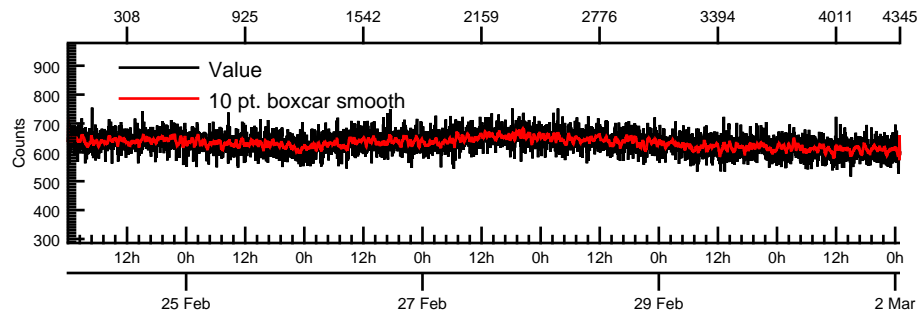
|            |     |               |      |
|------------|-----|---------------|------|
| TELREADOUT | 140 | NEMG_TOT_EVTS | 3876 |
| TELSOH     | 35  | NEMG_CZT_EVTS | 3376 |
| MODE       | 1   | NEMN_TOT_EVTS | 2800 |
| HVPS1      | 1   | L_BGO_CW      | 1    |
| HVPS1_SET  | 185 | H_BGO_CW      | 64   |
| HVPS2      | 1   | L_BGO_ROI     | 1    |
| HVPS2_SET  | 173 | H_BGO_ROI     | 64   |
| HVPS3      | 1   | L_BLP_MY_CW   | 1    |
| HVPS3_SET  | 178 | H_BLP_MY_CW   | 64   |
| HVPS4      | 1   | L_BLP_MY_ROI  | 1    |
| HVPS4_SET  | 182 | H_BLP_MY_ROI  | 64   |
| HVPS5      | 1   | L_BLP_PY_CW   | 1    |
| HVPS5_SET  | 127 | H_BLP_PY_CW   | 64   |
| HVPS6      | 1   | L_BLP_PY_ROI  | 1    |
| HVPS6_SET  | 170 | H_BLP_PY_ROI  | 64   |
| PM5_LVPS   | 1   | L_BLP_MZ_CW   | 1    |



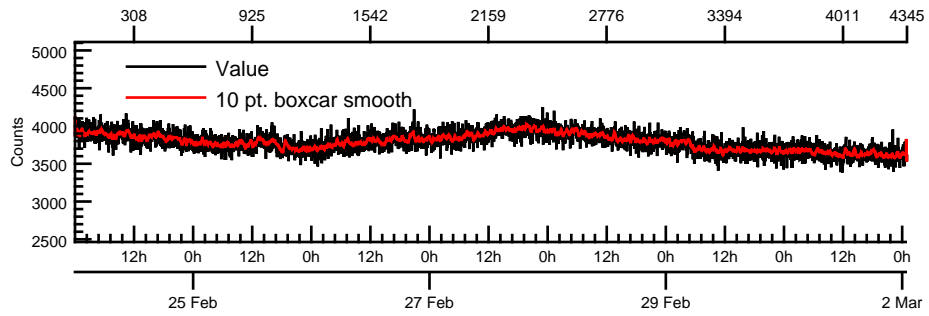
-Y BLP overload events



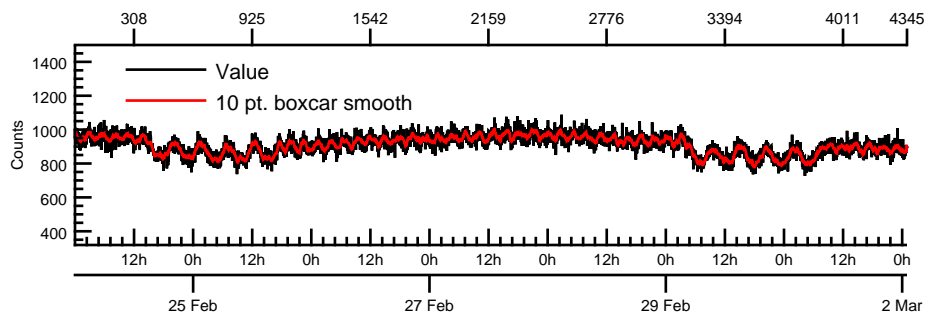
+Y BLP overload events

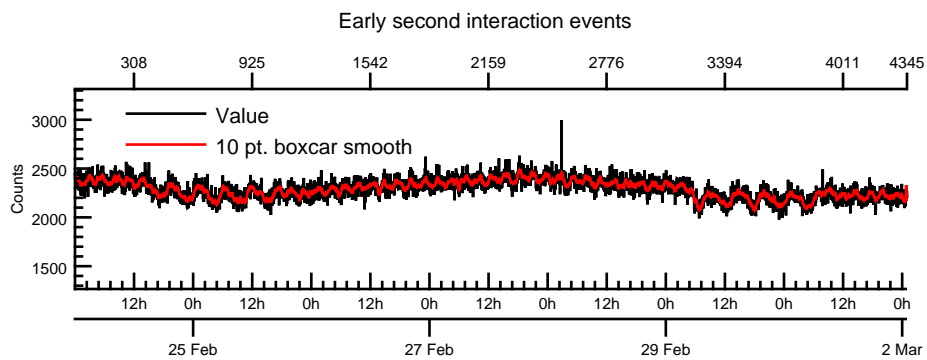
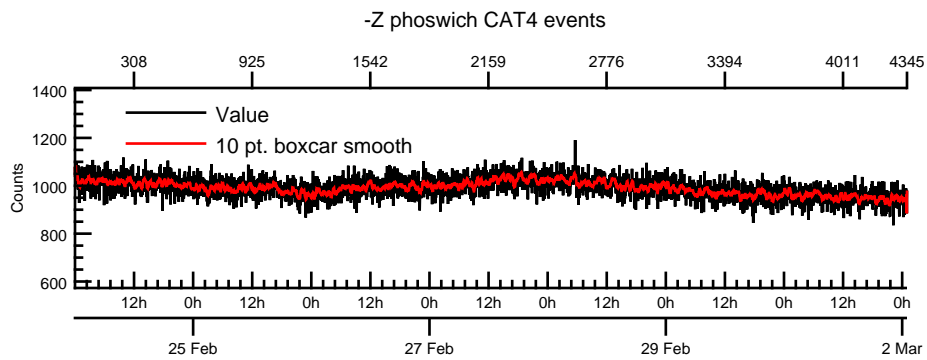
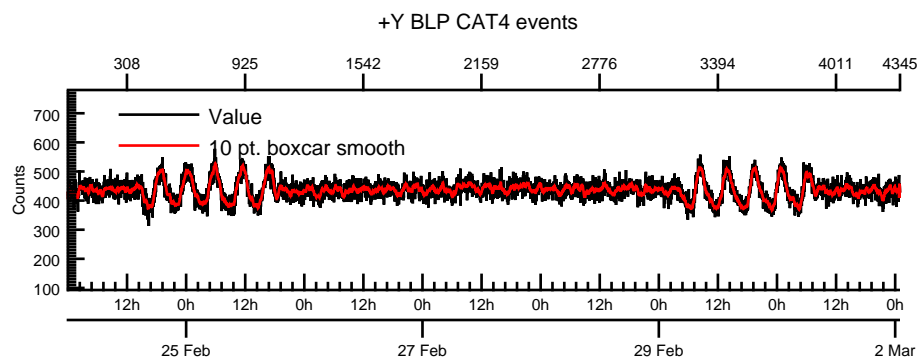
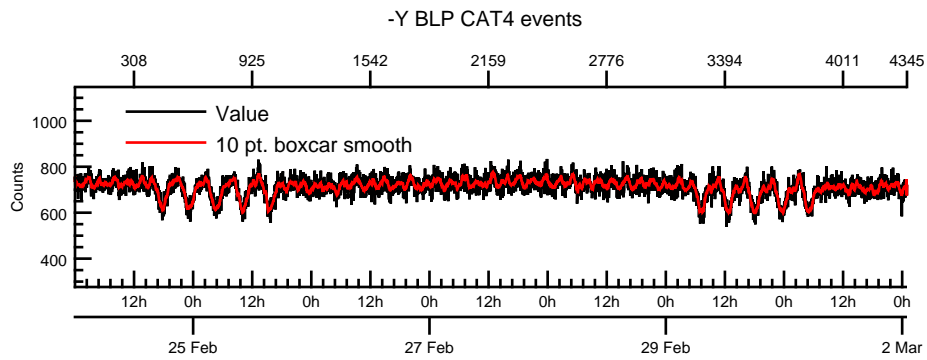


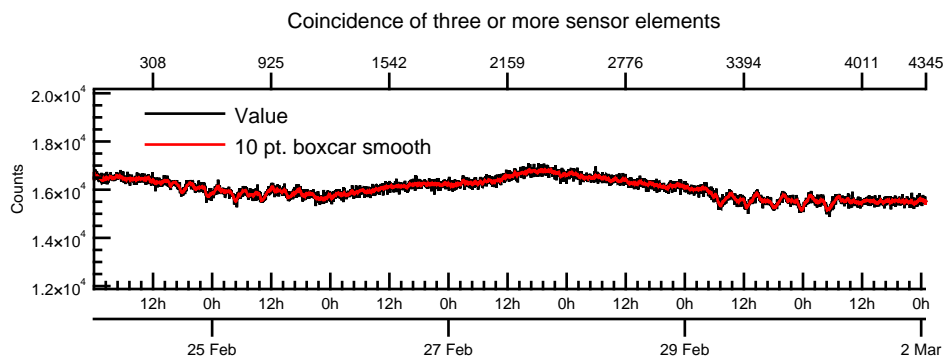
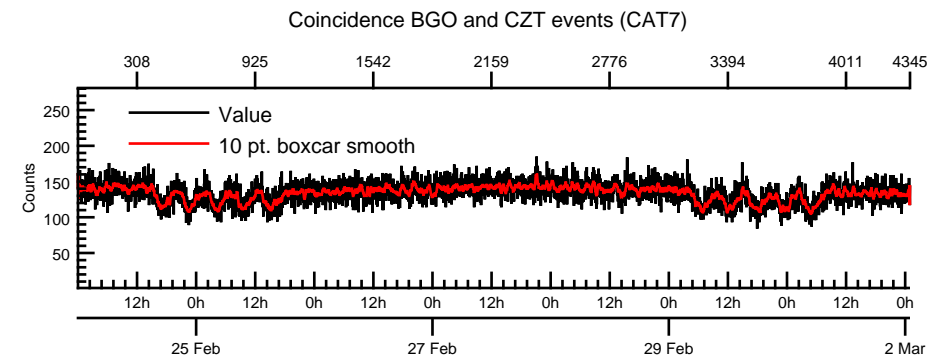
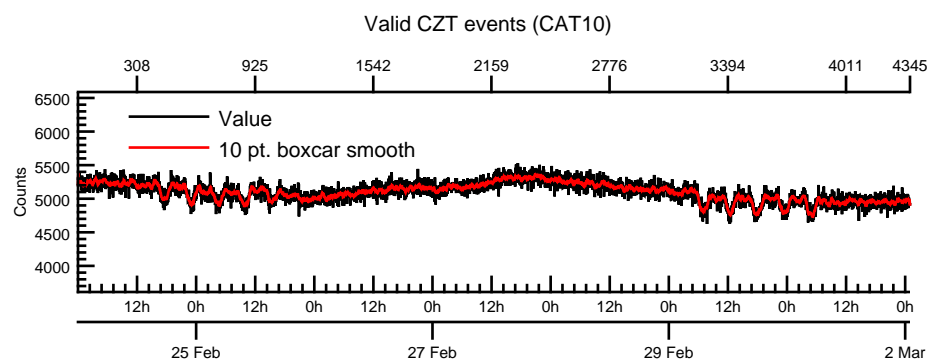
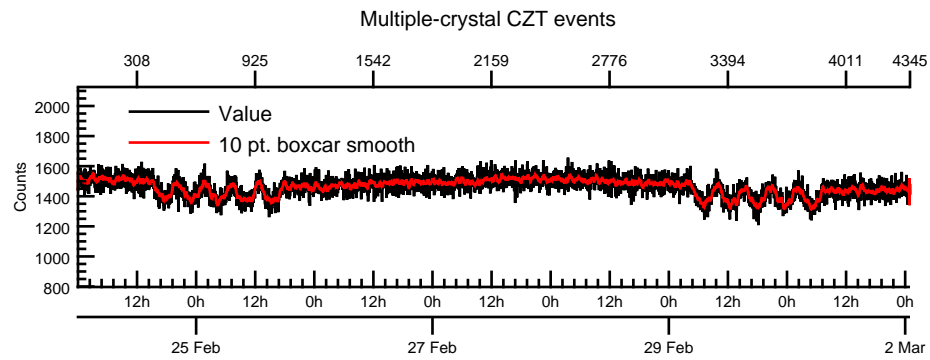
-Z phoswich overload events



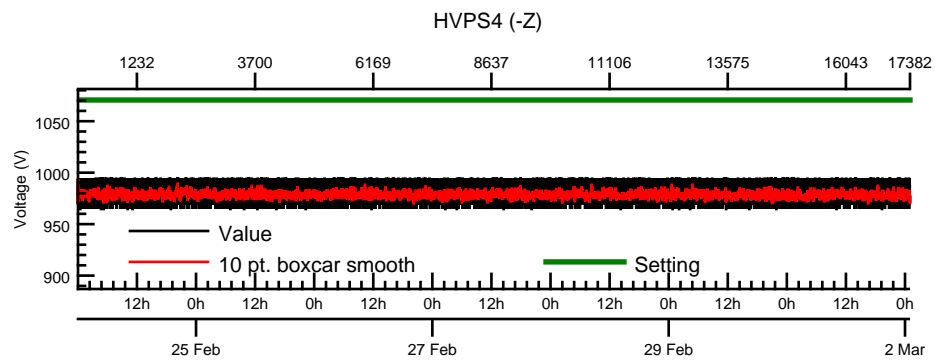
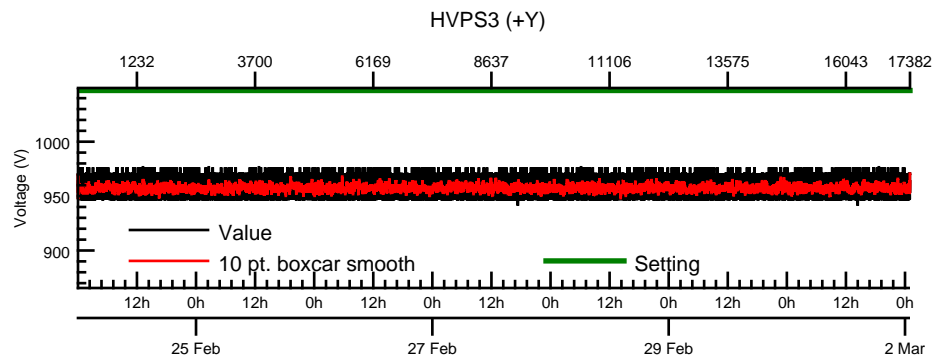
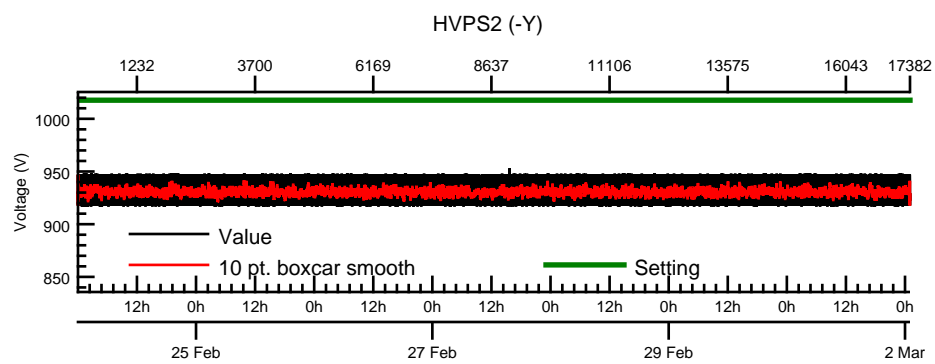
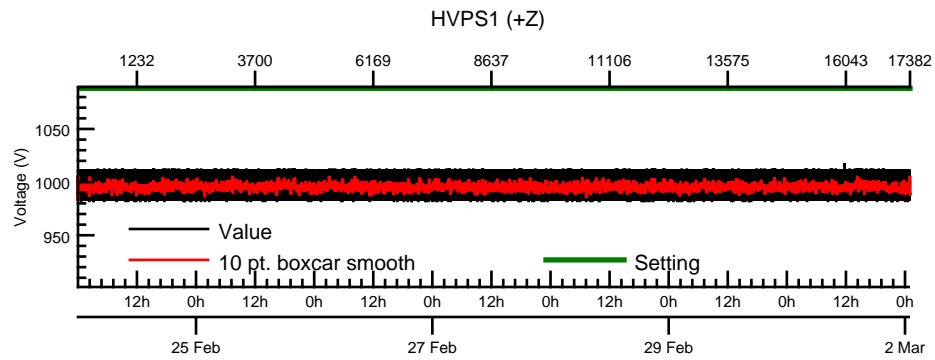
+Z phoswich CAT4 events

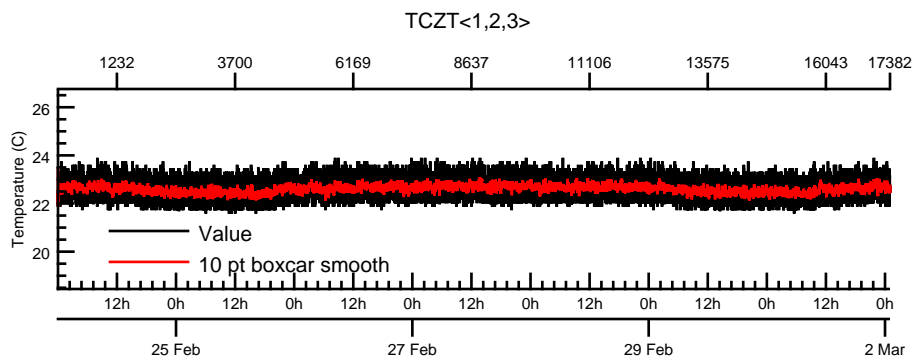
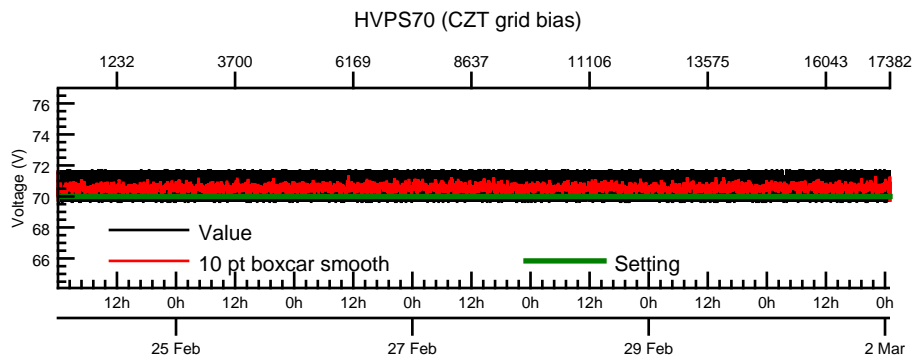
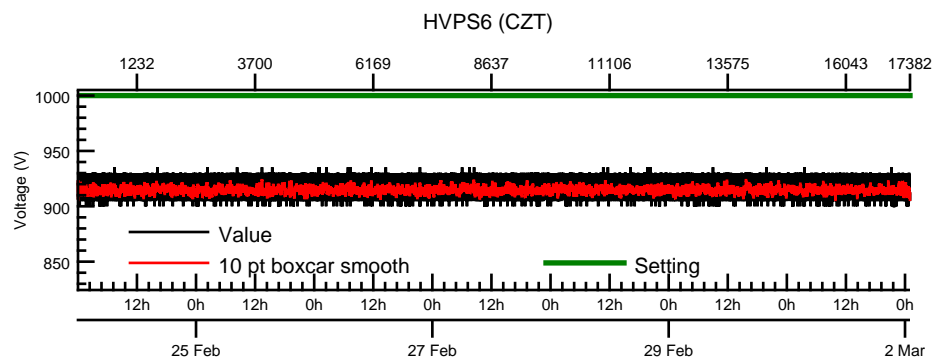
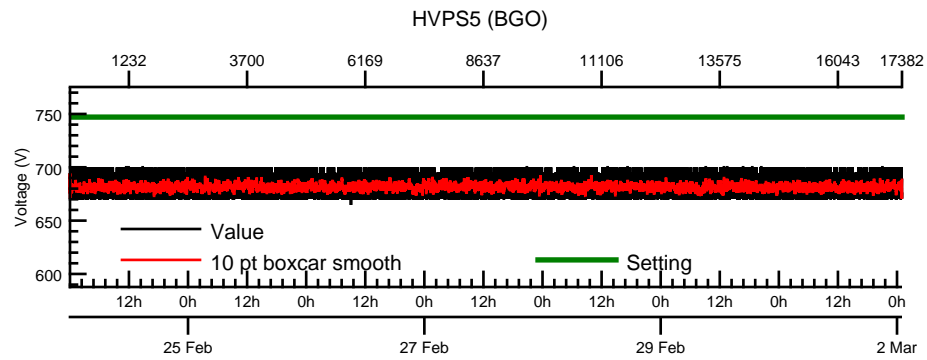




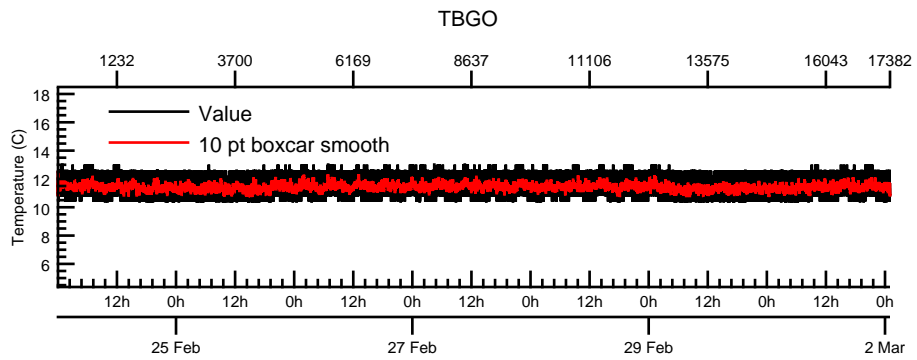
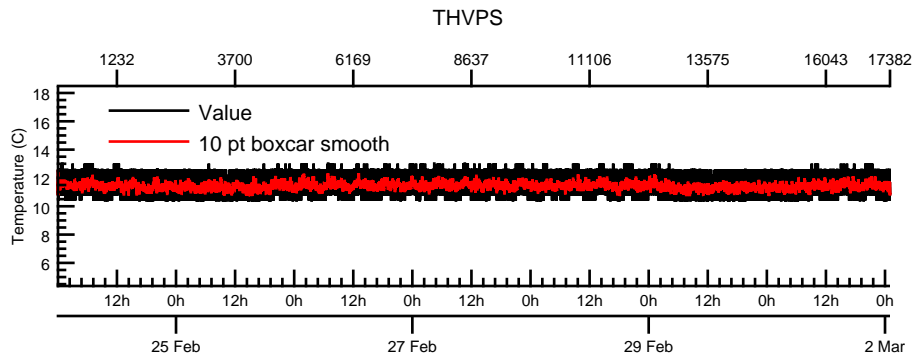
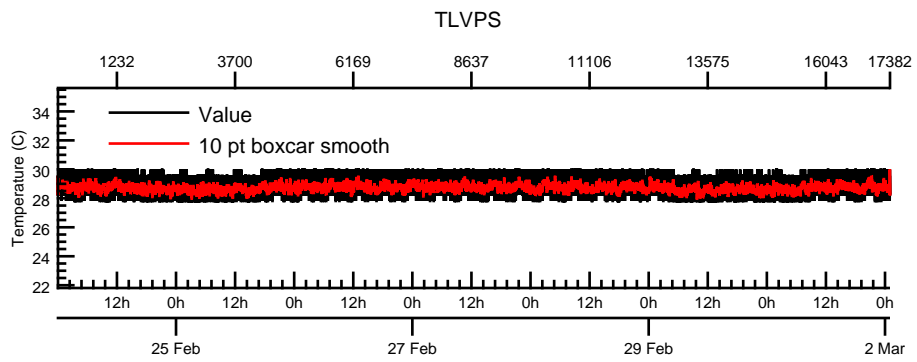
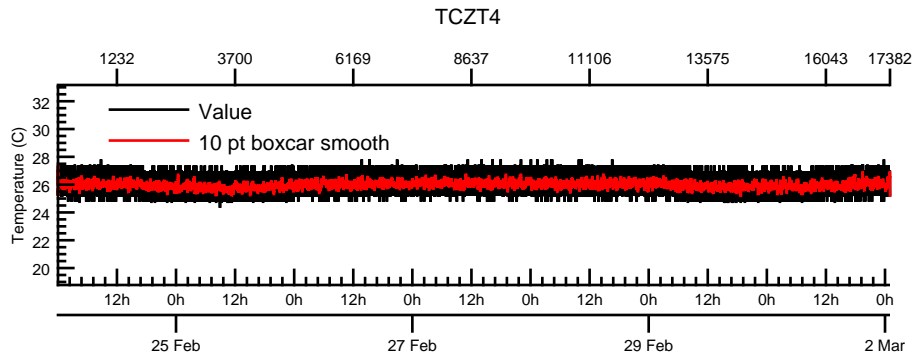


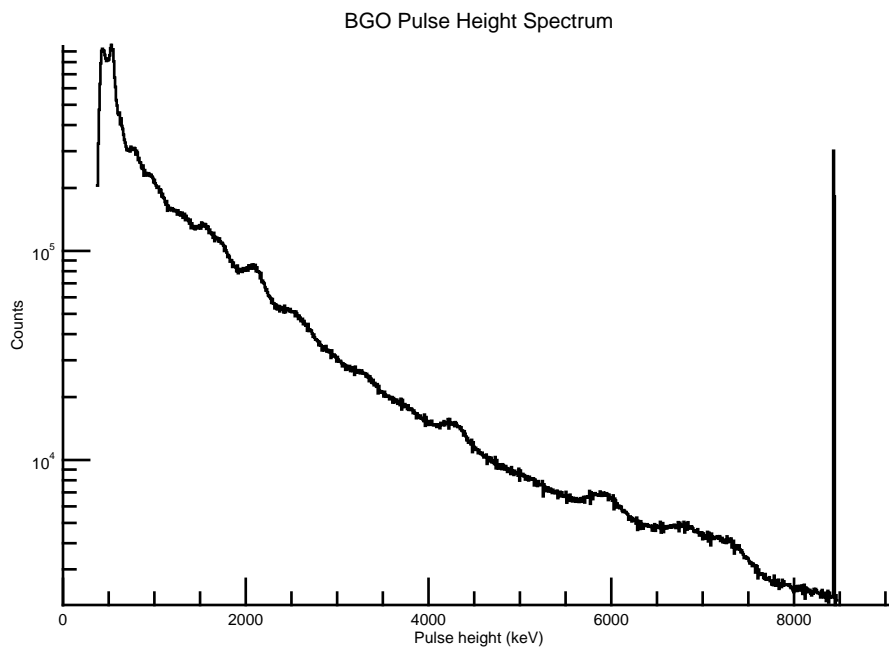
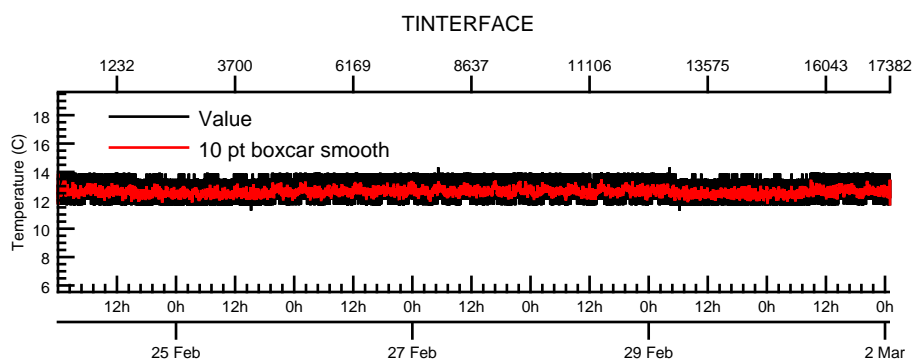
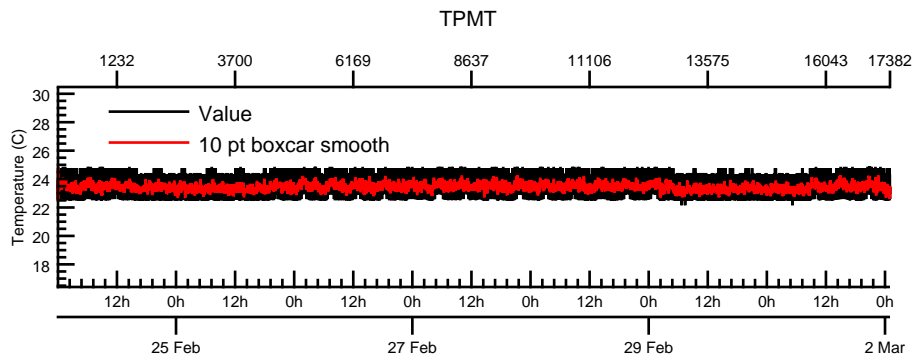




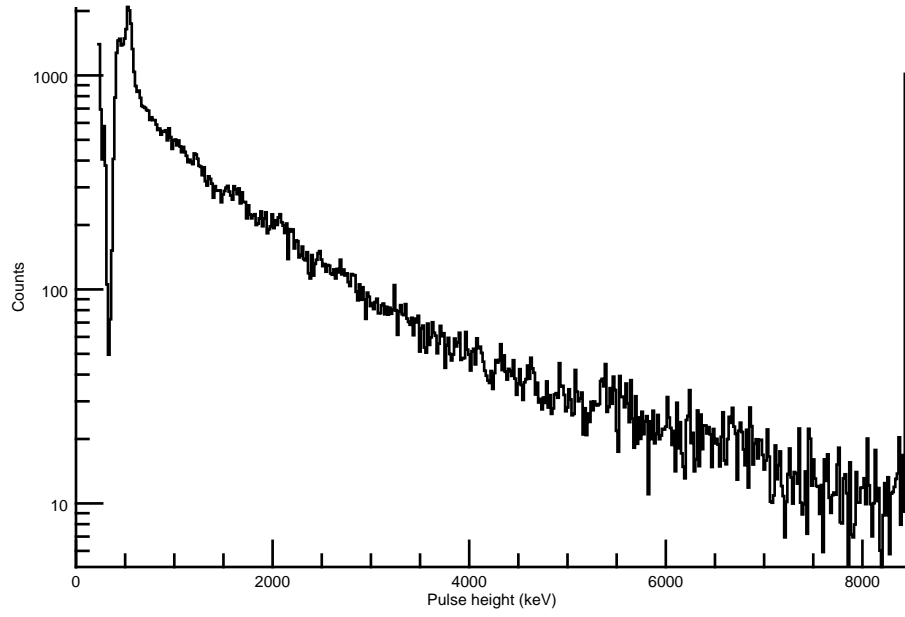




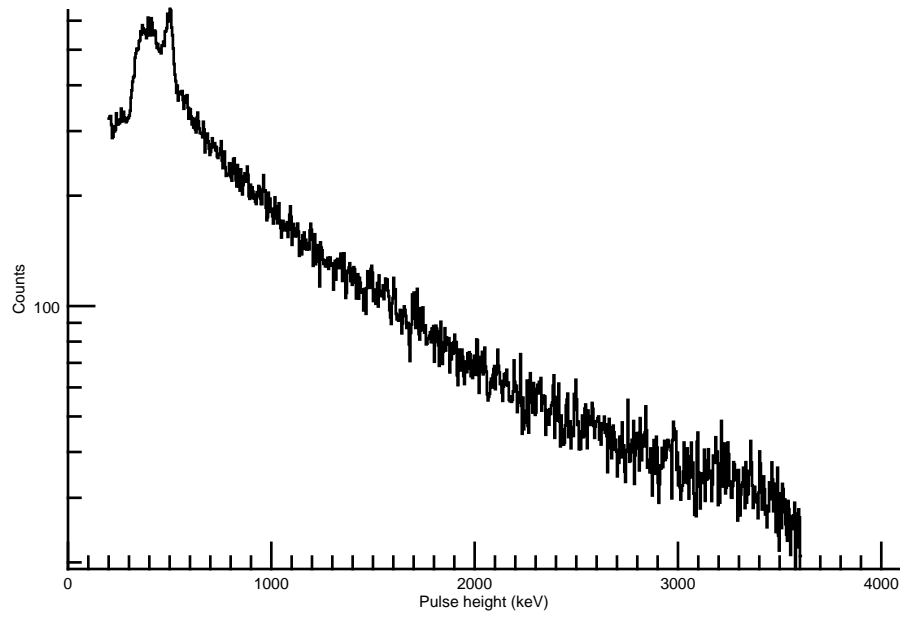




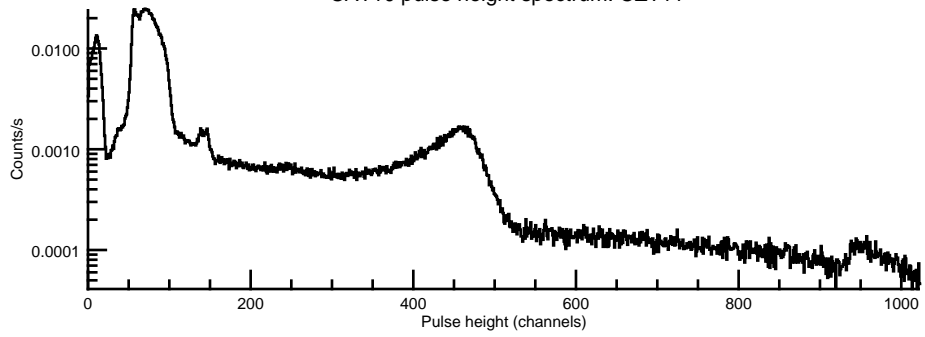
BGO-CZT pair spectrum: BGO



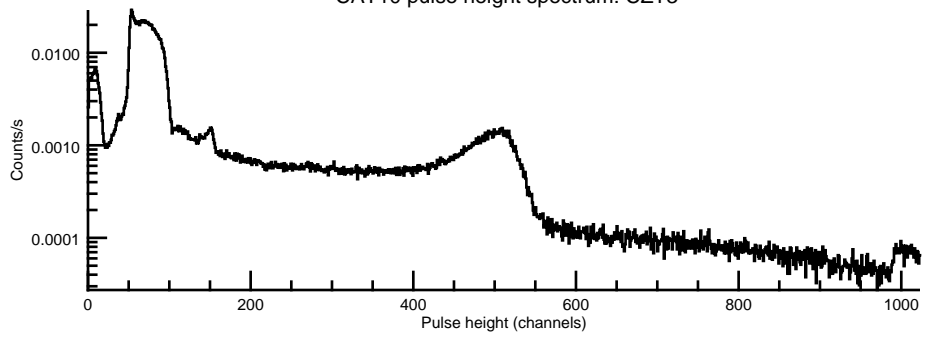
BGO-CZT pair spectrum: CZT



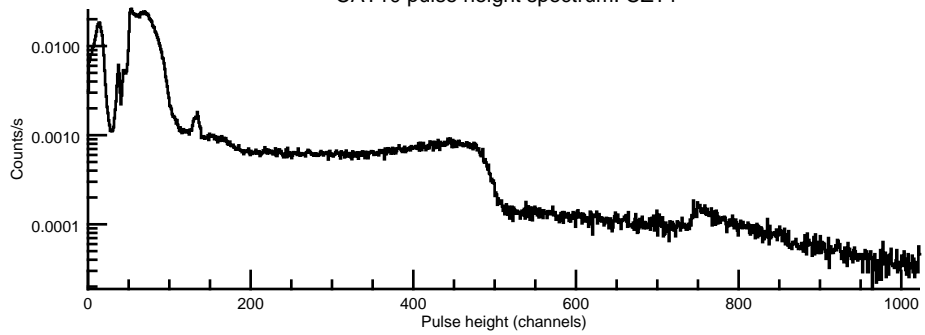
CAT10 pulse height spectrum: CZT11



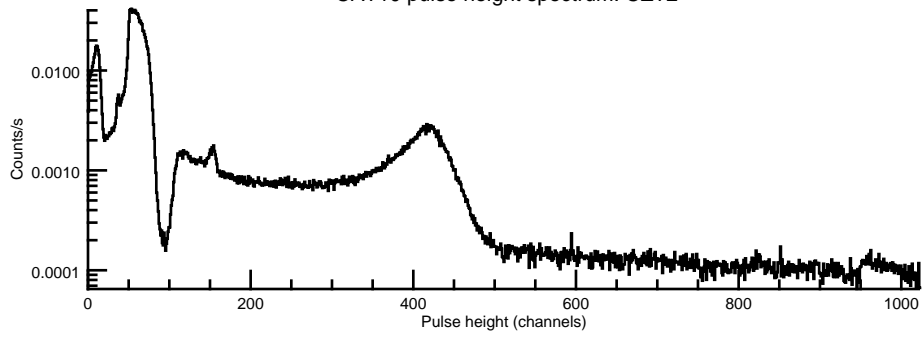
CAT10 pulse height spectrum: CZT3



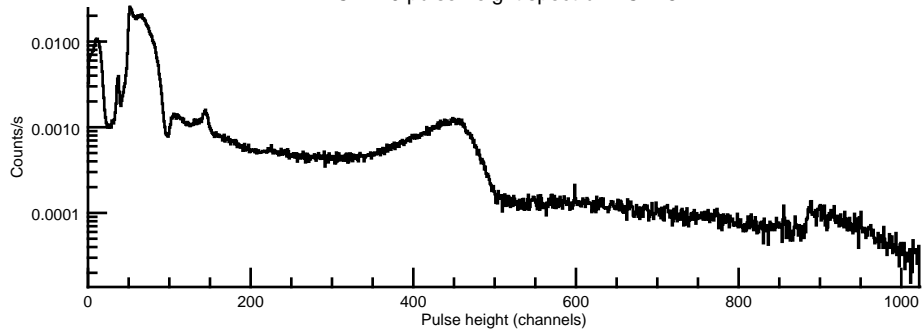
CAT10 pulse height spectrum: CZT1



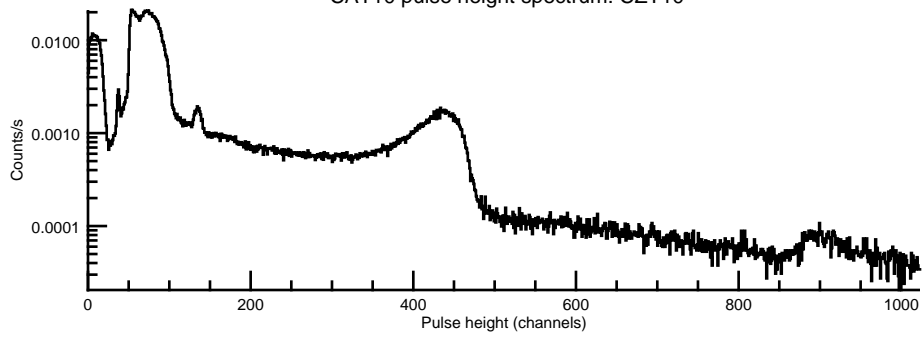
CAT10 pulse height spectrum: CZT2



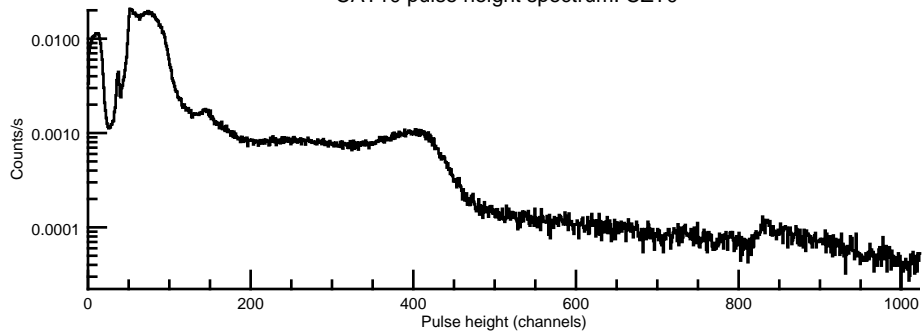
CAT10 pulse height spectrum: CZT8

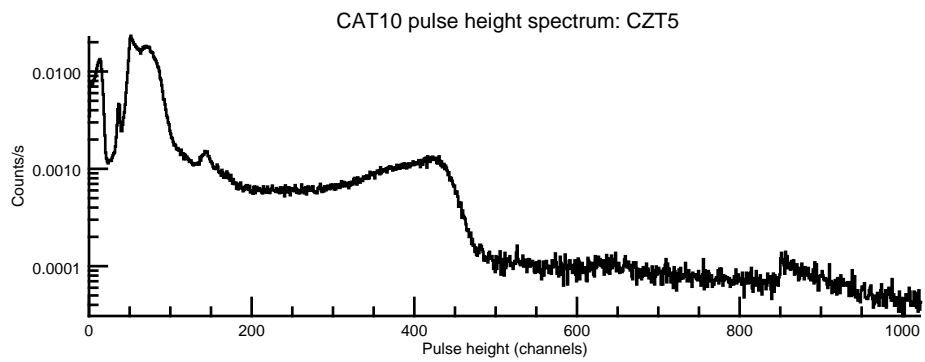
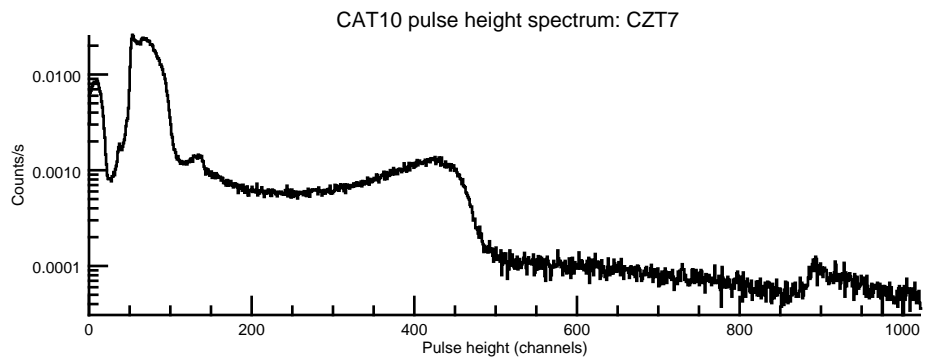
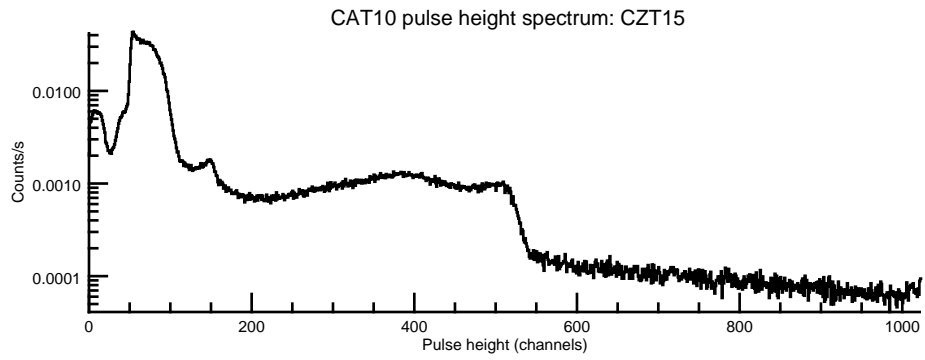


CAT10 pulse height spectrum: CZT10

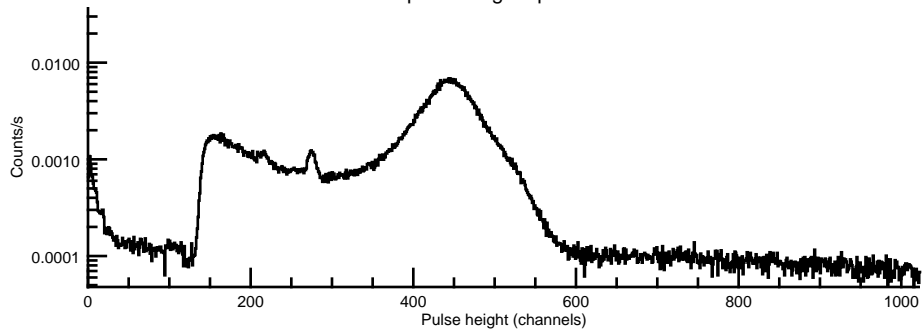


CAT10 pulse height spectrum: CZT0

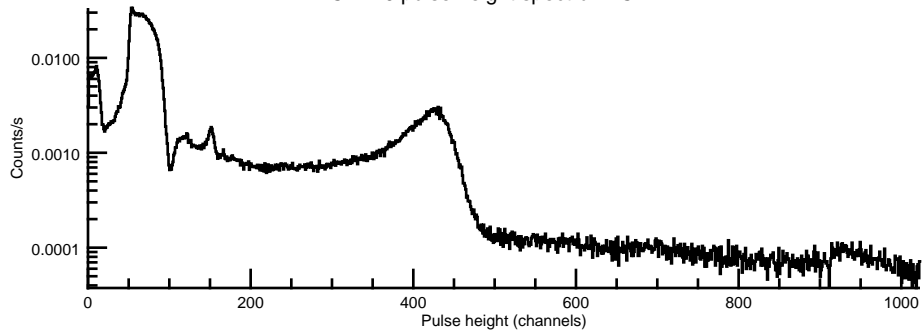




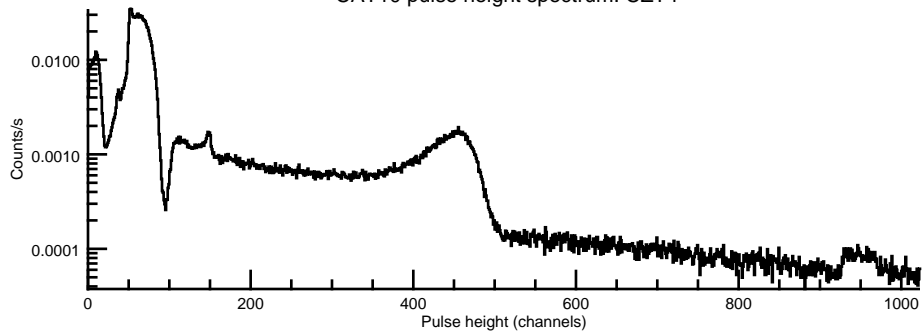
CAT10 pulse height spectrum: CZT6



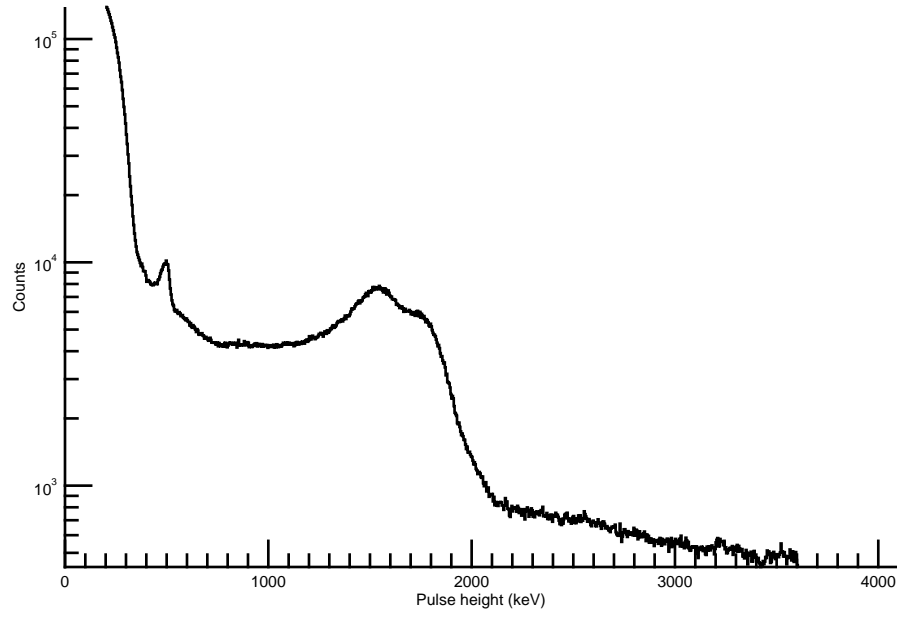
CAT10 pulse height spectrum: CZT14



CAT10 pulse height spectrum: CZT4



CAT10 CZT composite



CAT1 histograms

